

TECHNICAL MANUAL

DIRECT SUPPORT AND GENERAL  
SUPPORT  
MAINTENANCE REPAIR PARTS AND  
SPECIAL TOOLS LISTS  
(INCLUDING DEPOT MAINTENANCE  
REPAIR  
PARTS AND SPECIAL TOOLS)  
FOR

TEST HARNESS, RADIO SET  
AN/URM-157

(NSN 6625-00-766-4685)

AND

AN/URM-157A (NSN 6625-00-236-  
1557)



TECHNICAL MANUAL }  
No. 11-6625-622-34P }

HEADQUARTERS  
DEPARTMENT OF THE ARMY  
WASHINGTON, D.C., 9 December 1976

DIRECT SUPPORT AND GENERAL SUPPORT MAINTENANCE  
REPAIR PARTS AND SPECIAL TOOLS LISTS  
(INCLUDING DEPOT MAINTENANCE REPAIR PARTS  
AND SPECIAL TOOLS)  
FOR

TEST HARNESS, RADIO SET AN/URM-157  
(NSN 6625-00-766-4685)

AND

AN/URM-157A (NSN 6625-00-236-1557)

Current as of 7 September 1976

**REPORTING OF ERRORS**

**You can improve this manual by recommending improvements using DA Form 2028-2 (Test) located in the back of the manual. Simply tear out the self-addressed form, fill it out as shown on the sample, fold it where shown, and drop it in the mail.**

**If there are no blank DA Form 2028-2 (Test) in the back of your manual, use the standard DA Form 2028 (Recommended Changes to Publications and Blank Forms) and forward to the Commander, US Army Electronics Command, ATT: DRSEL-MA-Q, Fort Monmouth, New Jersey 07703.**

**In either case a reply will be furnished direct to you.**

**Table of Contents**

SECTION		Page	Illus Figure
	I. Introduction	1	
	II. Repair parts list	5	
Group	00 Test Harness, Radio Set AN/URM-157 and AN/URM-157A	5	1
	01 Cable Assembly, Power, Electrical CX-8998/URM-157	7	2
	02 Cable Assembly, Special Purpose, Electrical CX-9000/URM-157	9	3
	03 Cable Assembly, Special Purpose, Electrical CX-8997/URM-157	11	4
	04 Cable Assembly, Special Purpose, Electrical CX-8999/URM-157	13	5
	05 Cable Assembly, Special Purpose, Electrical CX-9001/URM-157	15	6
	06 Cable Assembly, Special Purpose, Electrical CX-9003/URM-157	17	7
	07 Cable Assembly, Special Purpose, Electrical CX-9004/URM-157	19	8
	08 Cable Assembly, Special Purpose, Electrical CX-9002/URM-157	21	9

\*This manual supersedes TM 11-6625-622-34P, 31 August 1971.

**Table of Contents-(Continued)**

	Page	Illus Figure
09 Cable Assembly, Special Purpose, Electrical CX-9005/URM-157. . . . .	2 3	1 0
10 Cable Assembly, Special Purpose, Electrical CX-9006/URM-157. . . . .	2 5	1 1
11 Cable Assembly, Radio Frequency CG-2727/U. . . . .	2 7	1 2
12 Cable Assembly, Special Purpose, Electrical CX-11046/URM-157. . . . .	2 9	1 3
13 Cable Assembly, Special Purpose, Electrical CX-10594/URM-157. . . . .	3 1	1 4
14 Cable Assembly, Speical Purpose, Electrical CX-11045/URM-157. . . . .	3 3	1 5
15 Cable Assembly, Speical Purpose, Electrical CX-11044/URM-157. . . . .	3 5	1 6
16 Test Harness Subassembly TS-1949/URM-157 or TS-1949A/URM-157. . . . .	3 7	17-25
Control, Radio Set C-3940/ARC-94 (See TM11-5821-248-34P for parts). . . . .		
Cable Assembly, Special Purpose, Electrical CX-12612/URM-157A. . . . .	5 5	2 6

SECTION III. Special Tools List (Not Applicable)

IV. National stock number and part number index	56
---	----

**SECTION I  
INTRODUCTION**

**1. Scope**

This manual lists repair parts and special tools required for performance of direct support and general maintenance of the AN/URM-157 and AN/URM-157A.

**2. General**

This Repair Parts and Special Tools List is divided into the following sections:

*a. Section II. Repair Parts List.* A list of repair parts authorized for use in the performance of maintenance. The list also included parts which must be removed for replacement of the authorized parts. Parts lists are composed of functional groups in ascending numerical sequence, with the parts in each group listed in figure and item number sequence.

*b. Section III. Special Tools List.* Not applicable.

*c. Section IV. National Stock Number and Part Number Index.* A list, in ascending National item identification number (NIIN, last 9 digits) sequence, of all National stock numbers appearing in the listings, followed by a list, in alphameric sequence, of all part numbers appearing in the listings. National stock number and part numbers are cross-referenced to each illustration figure and item number appearance.

**3. Explanation of Columns**

The following provides an explanation of columns found in the tabular listings:

*a. Illustration.* This column is divided as follows:

(1) *Figure number.* Indicates the figure number of the illustration in which the item is shown.

(2) *Item number.* The number used to identify each item called out in the illustration.

*b. Source, Maintenance, and Recoverability Codes (SMR).*

(1) *Source code.* Source code are assigned to support items to indicate the manner of acquiring support items for maintenance, repair, or overhaul of end items. Source codes are entered in the first and second positions of the Uniform SMR Code format as follows:

<i>Code</i>	<i>Definition</i>
PA	Item procured and stocked for anticipated or known usage.

<i>Code</i>	<i>Definition</i>
-------------	-------------------

XD - A support item that is not stocked. When required, item will be procured through normal supply channels.

**Note**

Cannibalization or salvage may be used as a source of supply for any items source coded above except those coded XA, XD, and aircraft support items as restricted by AR 700-42.

(2) *Maintenance code.* Maintenance codes are assigned to indicate the levels of maintenance authorized to USE and REPAIR support items. The maintenance codes are entered in the third and fourth positions of the Uniform SMR Code format as follows:

(a) The maintenance code entered in the third position will indicate the lowest maintenance level authorized to remove, replace, and use the support item. The maintenance code entered in the third position will indicate one of the following levels of maintenance:

O - Support item is removed, replaced, used at the organizational level.

H - Support item is removed, replaced, used at the general support level.

(b) The maintenance code entered in the fourth position indicates whether the item is to be repaired and identifies the lowest maintenance level with the capability to perform complete repair (i. e., all authorized maintenance functions). This position will contain one of the following maintenance codes:

<i>Code</i>	<i>Application/Explanation</i>
-------------	--------------------------------

H - The lowest maintenance level capable of complete repair of the support item is the general support level.

Z - Nonreparable. No repair is authorized.

(3) *Recoverability code.* Recoverability codes are assigned to support items to indicate the disposition action on unserviceable items. The recoverability code is entered in the fifth position of the Uniform SMR Code format as follows:

<i>Recoverability Codes</i>	<i>Definition</i>
-----------------------------	-------------------

Z - Nonreparable item. When unserviceable, condemn and dispose at the level indicated in position 3.

Recoverability  
Codes

Definition

H - Reparable item. When uneconomically repairable, condemn and dispose at the general support level.

c. *National Stock Number.* Indicates the National stock number assigned to the item and will be used for requisitioning purposes.

d. *Part Number.* Indicates the primary number used by the manufacturer (individual, company, firm, corporation, or Government activity), which controls the design and characteristics of the item by means of its engineering drawings, specifications standards, and inspection requirements, to identify an item or range of items.

**NOTE**

When a stock numbered item is requisitioned, the repair part received may have a different part number than the part being replaced.

e. *Federal Supply Code for Manufacturer (FSCM).* The FSCM is a 5-digit numeric code listed in SB 708-42 which is used to identify the manufacturer, distributor or Government agency, etc.

f. *Description.* Indicates the Federal item name and, if required, a minimum description to identify the item.

g. *Unit of Measure (U/M).* Indicates the standard of the basic quantity of the listed item as used in performing the actual maintenance function. This measure is expressed by a two-character alphabetical abbreviation (e. g., ea, in, pr, etc.). When the unit of measure differs from the unit of issue, the lowest unit of issue that will satisfy the required units of measure will be requisitioned.

h. *Quantity Incorporated in Unit.* Indicates the quantity of the item used in the breakout shown on the illustration figure, which is prepared for a functional group, sub functional group, or an assembly.

**4. Special Information**

a. Usable on codes are shown in the description column. Uncoded items are applicable to all models. Identification of the usable on codes used in this publication are:

<i>Code</i>	<i>Used on</i>
2AD	AN/URM-157
CYA	AN/URM-157A

b. The following publications pertain to the AN/URM-157 and AN/URM-157A and their components:

- TM 11-5821-248-12, Radio Set AN ARC-102
- TM 11-5821-248-20P, Radio Set AN/ARC-102.  
FSN 5821-050-8255
- TM 11-5821-248-34P, Radio Set AN/ARC-102
- TM 11-5821-248-35, Radio Set AN/ARC-102
- TM 11-6625-622-12, Test Harness, Radio Set AN/URM-157 and AN/URM-157A
- TM 11-6625-622-20P, Test Harness, Radio Set AN/URM-157 (NSN 6625-00-766-4685) and AN/URM-157A (NSN 6624-00-236-1557)
- TM 11-6625-622-40, Test Harness, Radio Set AN/URM-157 and AN/URM-157A

**5. How to Locate Repair Parts**

a. When National stock number or part number is unknown.

(1) *First.* Using the table of contents, determine the functional group within which the repair part belongs. This is necessary since illustrations are prepared for functional groups and listings are divided into the same groups.

(2) *Second.* Find the illustration covering the functional group to which the repair part belongs.

(3) *Third.* Identify the repair part on the illustration and note the illustration figure and item number of the repair part.

(4) *Fourth.* Using the Repair Parts Listing, find the figure and item number noted on the illustration.

b. When National stock number or part number is known.

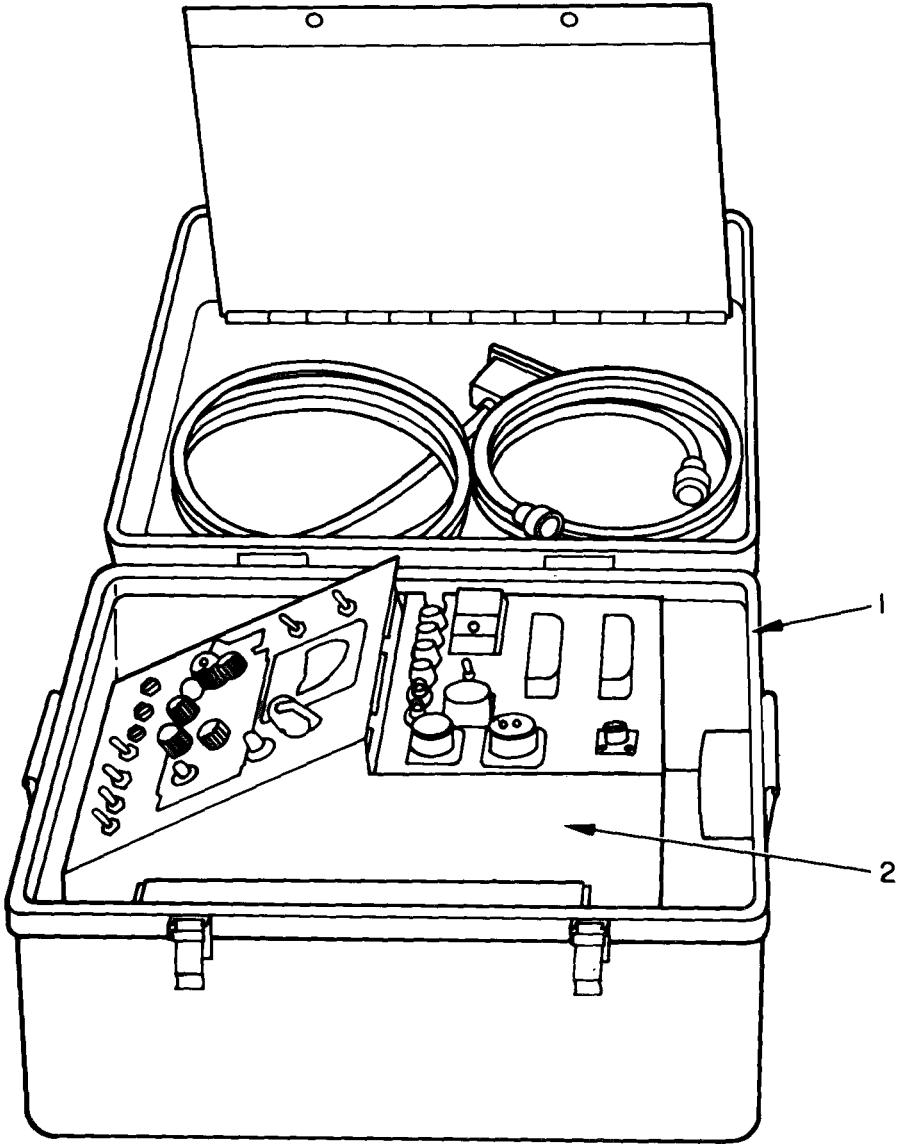
(1) *First.* Using the Index of National Stock Numbers and part Numbers, find the pertinent National stock number or part number. This index is in ascending NIIN sequence followed by a list of part numbers in ascending alphameric sequence, cross-referenced to the illustration figure number and item number.

(2) *Second.* After finding the figure and item number, locate the figure and item number in the repair parts list.

**6. Abbreviations**

Not applicable.

(Next printed page is 4.1)



ELIDROOI

Figure 1. Test Harness, Radio Set AN/URM-157 AN/URM-157A (Sheet 1 of 2).

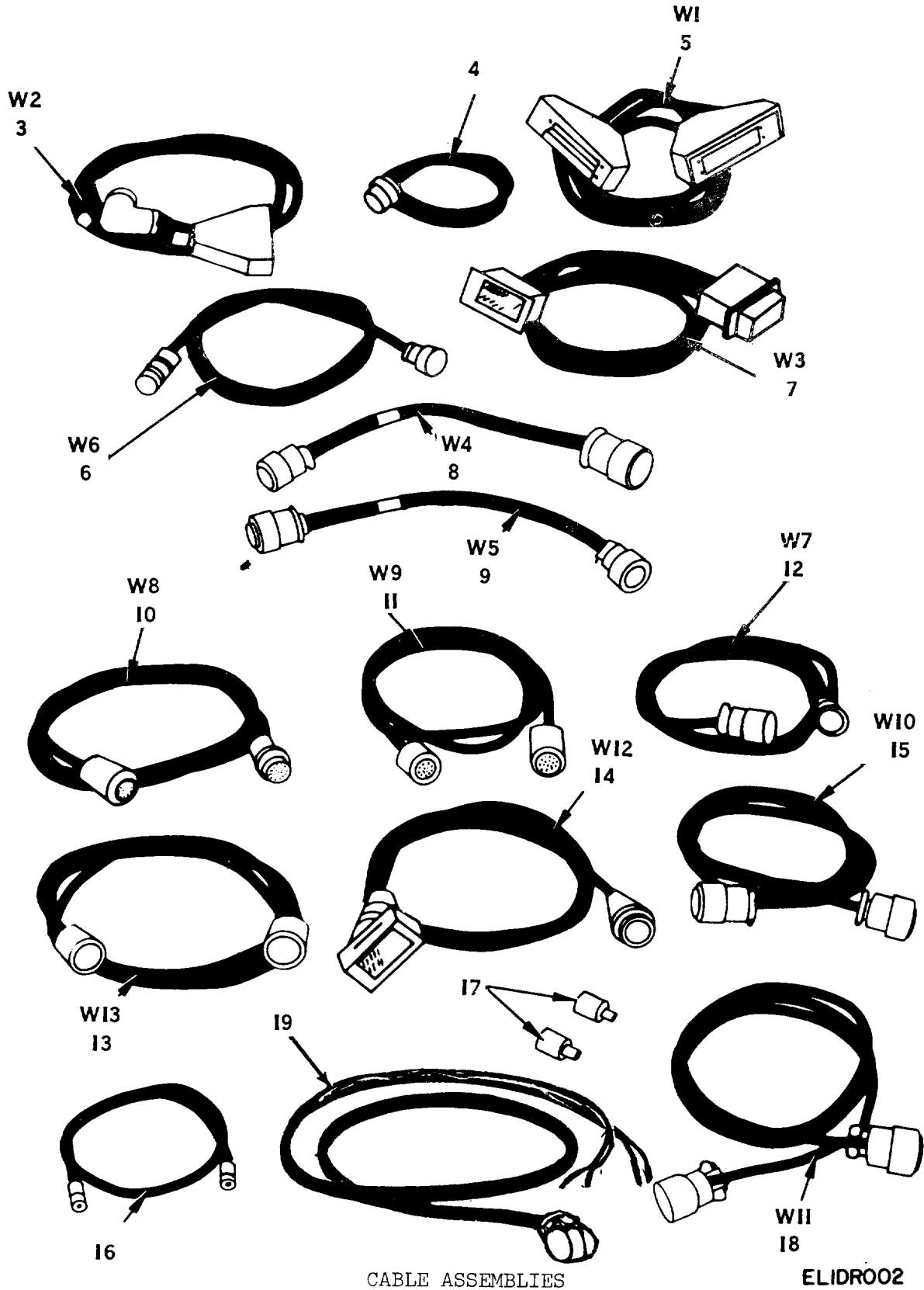


Figure 1. Test Harness, Radio Set AN/URM-157 and AN/URM-157A  
(Sheet 2 of 2).



SECTION II (1) ILLUSTRATION (A) (B) FIG ITEM NO NO		(2) SMR CODE	(3) NATIONAL STOCK NUMBER	(4) PART NUMBER	(5) FSCM	TM11-6625-622-34P (6) DESCRIPTION	USABLE ON CODE	(7) U/M	(8) QTY INC IN UNIT
						GROUP 00 TEST HARNESS,RADIO SET			
						AN/URM-157 AND AN/URM-157A			
1	1	XDOHH		CY4064URM157	80058	CASE, TEST HARNESS		EA	1
1	2	PAOHH	6625-00-766-3847	TS1949URM157	80058	TEST HARNESS SUBASSEMBLY	2AD	EA	1
1	2	PAOHH	6625-00-237-4389	TS1949AURM157	80058	TEST HARNESS SUBASSEMBLY	CYA	EA	1
1	3	PAOHH	5995-00-797-7299	CX8998URM157	80058	CABLE ASSEMBLY,POWER,ELECTRICAL	2AD	EA	1
1	4	XDOHH	5995-00-985-8179	CX8999URM157	80058	CABLE ASSEMBLY,SPECIAL PURPOSE,ELECTRICAL		EA	1
1	5	XDOHH		CX8997URM157	80058	CABLE ASSEMBLY,SPECIAL PURPOSE,ELECTRICAL		EA	1
1	6	XDOHH	5995-00-985-8177	CX9003URM157	80058	CABLE ASSEMBLY,SPECIAL PURPOSE,ELECTRICAL		EA	1
1	7	XDOHH	5995-00-985-8180	CX9000URM157	80058	CABLE ASSEMBLY,SPECIAL PURPOSE,ELECTRICAL		EA	1
1	8	XDOHH	5995-00-985-8181	CX9001URM157	80058	CABLE ASSEMBLY,SPECIAL PURPOSE,ELECTRICAL		EA	1
1	9	XDOHH	5995-00-985-8178	CX9002URM157	80058	CABLE ASSEMBLY,SPECIAL PURPOSE,ELECTRICAL		EA	1
1	10	XDOHH	5995-00-985-8182	CX9005URM157	80058	CABLE ASSEMBLY,SPECIAL PURPOSE,ELECTRICAL		EA	1
1	11	XDOHH	5995-00-985-8183	CX9006URM157	80058	CABLE ASSEMBLY,SPECIAL PURPOSE,ELECTRICAL		EA	1
1	12	XDOHH	5995-00-985-8176	CX9004URM157	80058	CABLE ASSEMBLY,SPECIAL PURPOSE,ELECTRICAL		EA	1
1	13	XDOHH	5995-00-935-2527	CX10594URM157	80058	CABLE ASSEMBLY,SPECIAL PURPOSE,ELECTRICAL		EA	1
1	14	XDOHH	5995-00-985-8167	CX11046URM157	80058	CABLE ASSEMBLY,SPECIAL PURPOSE,ELECTRICAL	2AD	EA	1
1	15	XDOHH	5995-00-985-8174	CX11045URM157	80058	CABLE ASSEMBLY,SPECIAL PURPOSE,ELECTRICAL	2AD	EA	1
1	16	XDOHH		CG2727U	80058	CABLE ASSEMBLY,RADIO FREQUENCY		EA	1
1	17	PAOZZ	5935-00-259-0205	UG201AU	80058	ADAPTER,CONNECTOR		EA	2
1	18	XDOHH	5995-00-985-8168	CX11044URM157	80058	CABLE ASSEMBLY,SPECIAL PURPOSE,ELECTRICAL	2AD	EA	1
1	19	PAOHH	6625-00-471-0623	CX12612URM157A	80058	CABLE ASSEMBLY,SPECIAL PURPOSE,ELECTRICAL	CYA	EA	1

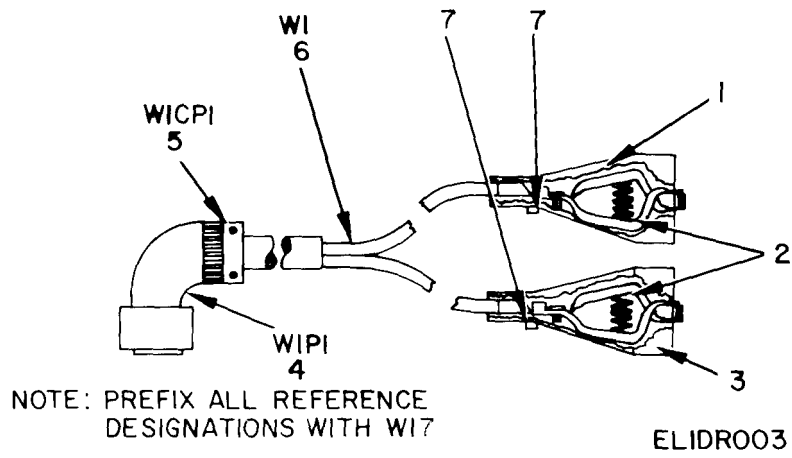


Figure 2. Cable Assembly, Power, Electrical CX-8998/URM-157.

SECTION II		TM11-6625-622-34P					
(1)	(2)	(3)	(4)	(5)	(6)	(7)	(8)
ILLUSTRATION							QTY
(A)	(B)	NATIONAL			DESCRIPTION		INC
FIG	ITEM	STOCK	PART	FSCM		USABLE ON CODE	IN
NO	NO	NUMBER	NUMBER				UNIT
					GROUP 01 CABLE ASSEMBLY,POWER,ELECTRICAL		
					CX-8998/URM-157		
2	1	PAHZZ	5975-00-281-0024	23RED	76545		EA 1
2	2	XDHZZ		139	77060		EA 2
2	3	PAHZZ	5975-00-902-5935	23BLK	76545		EA 1
2	4	PAHZZ	5935-00-538-4149	MS3108B22-22S	96906		EA 1
2	5	PAHZZ	5935-00-223-0572	MS3057-12A	96906		EA 1
2	6	PAHZZ	5995-00-437-2431	761-5007-001	13499		EA 1
2	7	XDHZZ	5940-00-060-3751	MS35446-5	96906		EA 2

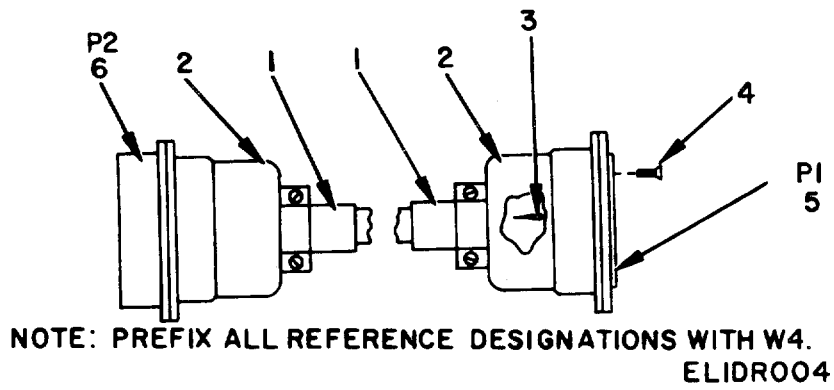


Figure 3. Cable Assembly, Special Purpose, Electrical CX-9000/URM-157.

SECTION II		TM11-6625-622-34P					
(1)	(2)	(3)	(4)	(5)	(6)	(7)	(8)
ILLUSTRATION							QTY
(A)	(B)	NATIONAL			DESCRIPTION		INC
FIG	ITEM	STOCK	PART	FSCM		USABLE ON CODE	IN
NO	NO	NUMBER	NUMBER				UNIT
					GROUP 02 CABLE ASSEMBLY,SPECIAL PURPOSE, ELECTRICAL CX-9000/URM-157		
3	1	XDHZZ 5365-00-598-5379	AN3420-16A	88044	BUSHING,CABLE		EA 2
3	2	PAHZZ 5935-00-610-0940	DPD347-8A101	71468	SHIELD,ELECTRICAL CONNECTOR		EA 2
3	3	XDHZZ	553-7217-003	13499	TERMINAL,LUG		EA 4
3	4	PAHZZ 5305-00-763-6963	MS51959-28	96906	SCREW,MACHINE		EA 8
3	5	PAHZZ 5935-00-581-3086	DPD23HV1-34P2V	71468	CONNECTOR,RECEPTACLE,ELECTRICAL		EA 1
3	6	PAHZZ 5935-00-295-3056	DPD23HV1-33S2V	71468	CONNECTOR,RECEPTACLE,ELECTRICAL		EA 1

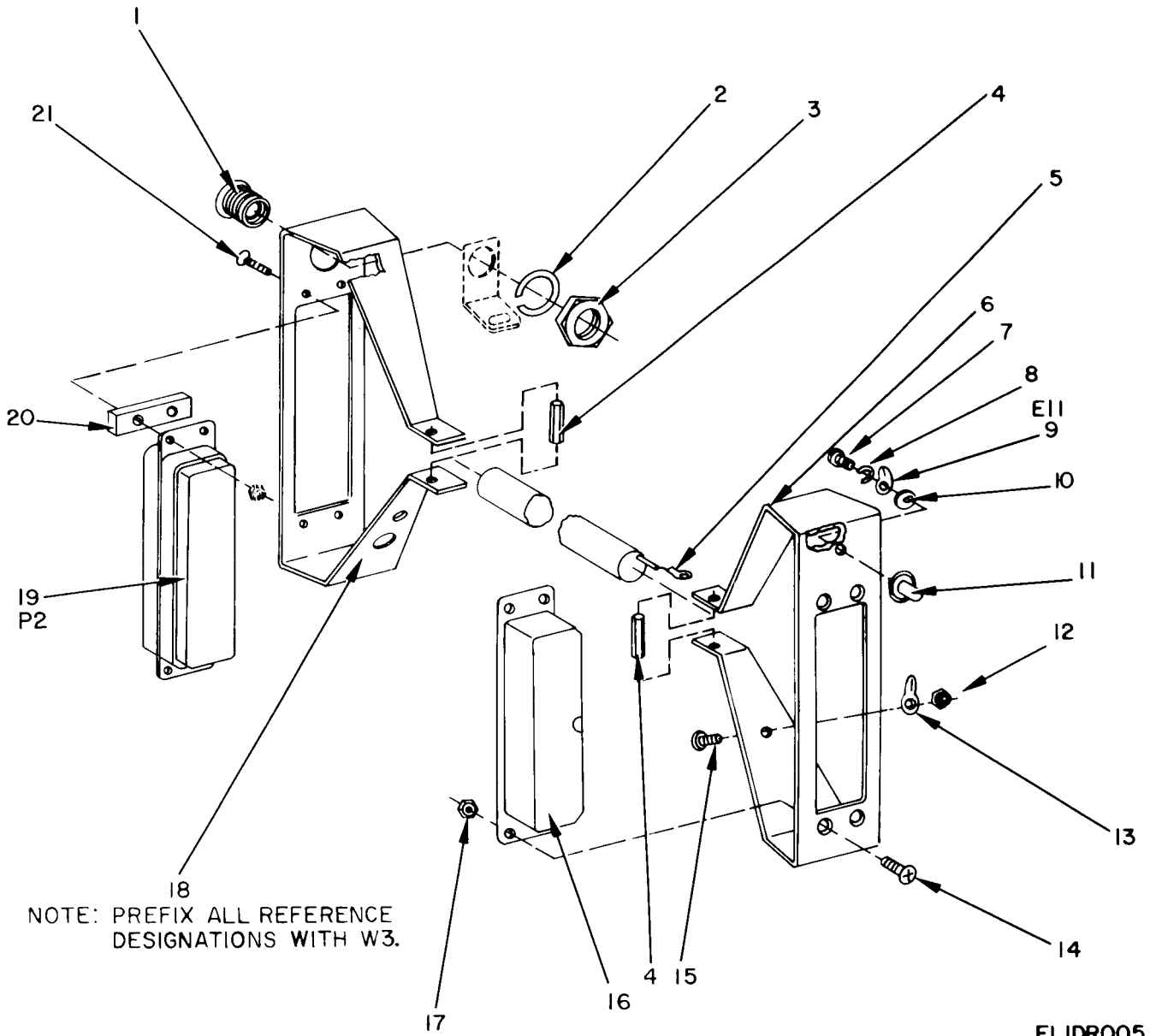
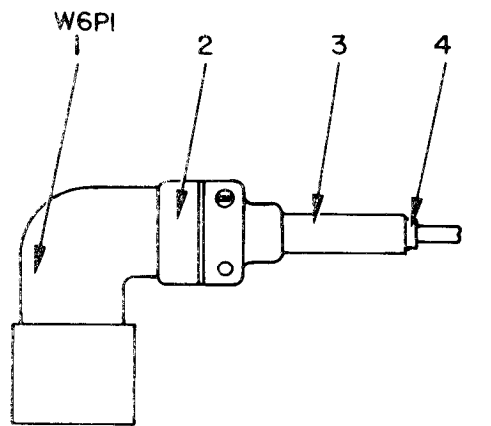


Figure 4. Cable Assembly, Special Purpose, Electrical CX-8997/URM-157.

SECTION II (1) ILLUSTRATION (A) (B) FIG ITEM NO NO		(2) SMR CODE	(3) NATIONAL STOCK NUMBER	(4) PART NUMBER	(5) FSCM	TM11-6625-622-34P (6) DESCRIPTION	(7) USABLE ON CODE U/M	(8) QTY INC IN UNIT
						GROUP 03 CABLE ASSEMBLY, SPECIAL PURPOSE, ELECTRICAL CX-8997/URM-157		
4	1	PAHZZ	5821-00-816-9751	546-7242-002	13499	BUSHING ASSEMBLY	EA	1
4	2	PAHZZ	5310-00-282-9059	1722-01	78189	WASHER, LOCK	EA	1
4	3	PAHZZ	5310-00-269-6291	8947-151	04009	NUT, PLAIN, HEXAGON	EA	1
4	4	PAHZZ	5310-00-821-1925	540-9045-003	13499	STANDOFF	EA	2
4	5	XDHZZ		553-7216-002	13499	TERMINAL, LUG	EA	4
4	6	XDHZZ		548-8007-003	13499	FRAME, ELECTRICAL	EA	1
4	7	XDHZZ		P343-0328-000	77250	SCREW, MACHINE	EA	1
4	8	XDHZZ		310-0077-000	79807	WASHER, LOCK	EA	1
4	9	PAHZZ	5940-00-087-9838	553-9904-003	13499	TERMINAL, LUG	EA	1
4	10	PAHZZ	5940-00-087-9839	553-9905-003	13499	TERMINAL, LUG	EA	1
4	11	PAHZZ	5999-00-081-5971	546-6864-002	13499	CONTACT, ELECTRICAL	EA	1
4	12	PAHZZ	5310-00-181-6120	510-061810-01STC	78189	NUT, ASSEMBLED WASHER	EA	8
4	13	PAHZZ	5940-00-615-8958	2104-06-02-2520N	78189	TERMINAL, LUG	EA	2
4	14	PAHZZ	5305-00-958-0997	P342-0157-000	77250	SCREW, MACHINE	EA	4
4	15	PAHZZ	5305-00-059-8249	P343-0329-000	77250	SCREW, MACHINE	EA	2
4	16	PAHZZ	5935-00-060-8066	DPE60-34PA101	71468	CONNECTOR, RECEPTACLE, ELECTRICAL	EA	1
4	17	PAHZZ	5310-00-181-6119	510-041810-01STC	78189	NUT, ASSEMBLED WASHER	EA	4
4	18	XDHZZ		548-8008-003	13499	FRAME, ELECTRICAL CONNECTOR	EA	1
4	19	PAHZZ	5935-00-061-7747	DPE60-33SA101	71468	CONNECTOR, RECEPTACLE, ELECTRICAL	EA	1
4	20	XDHZZ		548-8004-002	13499	PLATE, SPACER	EA	2
4	21	XDHZZ		P342-0169-000	77250	SCREW, MACHINE	EA	4

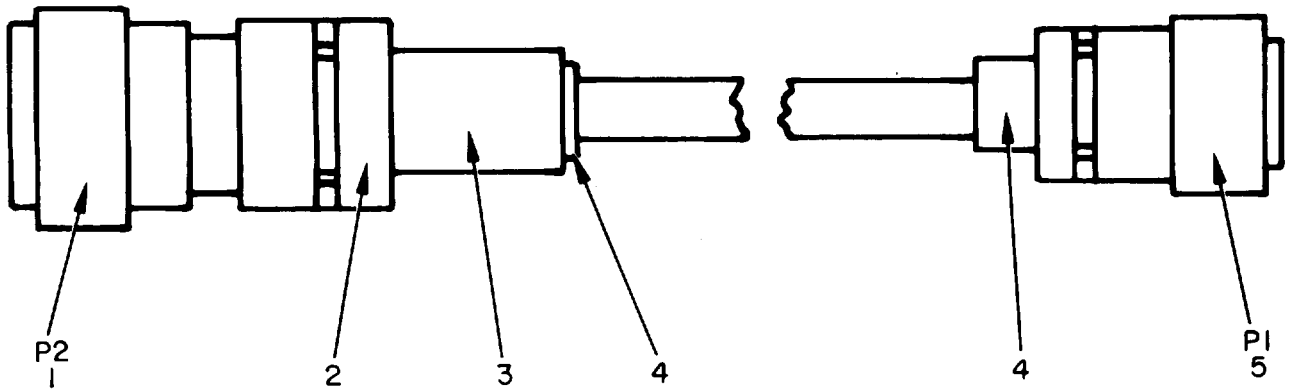


ELIDR006

Figure 5. Cable Assembly, Special Purpose, Electrical CX-8999/URM-157.



SECTION II (1) ILLUSTRATION (A) (B) FIG ITEM NO NO		(2) SMR CODE	(3) NATIONAL STOCK NUMBER	(4) PART NUMBER	(5) FSCM	TM11-6625-622-34P (6) DESCRIPTION	USABLE ON CODE	(7) U/M	(8) QTY INC IN UNIT
						GROUP 04 CABLE ASSEMBLY,SPECIAL PURPOSE, ELECTRICAL CX-8999/URM-157			
5	1	XDHZZ		MS3108B18-4S	96906	CONNECTOR,PLUG,ELECTRICAL		EA	1
5	2	PAHZZ	5935-00-809-0786	MS3057-10A	96906	CLAMP,CABLE		EA	1
5	3	PAHZZ	5365-00-141-6944	AN3420-8	88044	BUSHING,CABLE		EA	1
5	4	PAHZZ	5365-00-820-4535	AN3420-6	88044	BUSHING,CABLE		EA	1

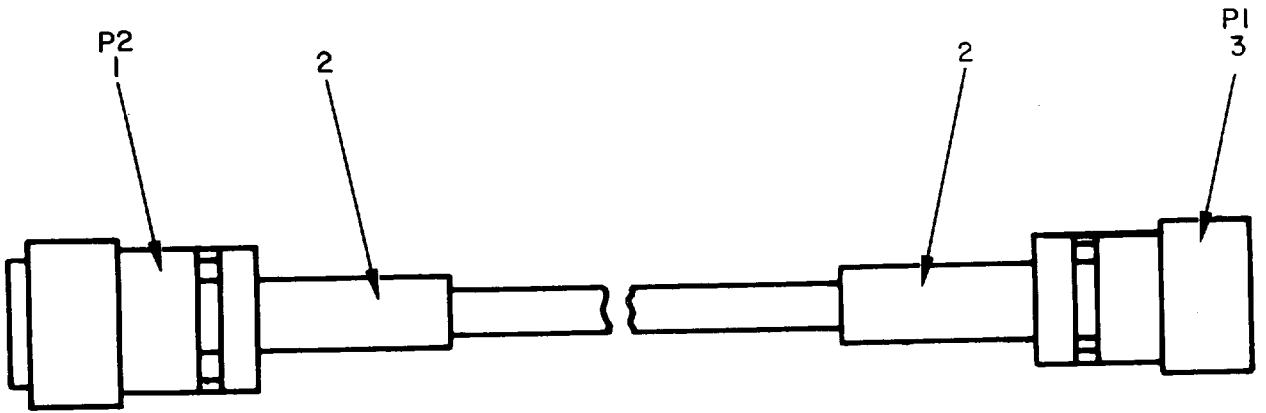


NOTE: PREFIX ALL REFERENCE DESIGNATIONS WITH W7.

ELIDR007

Figure 6. Cable Assembly, Special Purpose, Electrical CX-9001/URM-157.

SECTION II (1) ILLUSTRATION (A) (B) FIG ITEM NO NO		(2) SMR CODE	(3) NATIONAL STOCK NUMBER	(4) PART NUMBER	(5) FSCM	TM11-6625-622-34P (6) DESCRIPTION	USABLE ON CODE	(7) U/M	(8) QTY INC IN UNIT
						GROUP 05 CABLE ASSEMBLY, SPECIAL PURPOSE, ELECTRICAL CX-9001/URM-157			
6	1	XDHZZ		MS3106A28-15S	96906	CONNECTOR, PLUG, ELECTRICAL		EA	1
6	2	PAHZZ	5935-00-280-2353	MS3057-16A	96906	CLAMP, CABLE		EA	1
6	3	PAHZZ	5340-00-598-5287	AN3420-12	88044	BUSHING, CABLE		EA	1
6	4	PAHZZ	5365-00-663-2125	AN3420-10	88044	BUSHING, CABLE		EA	2
6	5	XDHZZ		PT06A20-41PSR	77820	CONNECTOR, PLUG, ELECTRICAL		EA	1

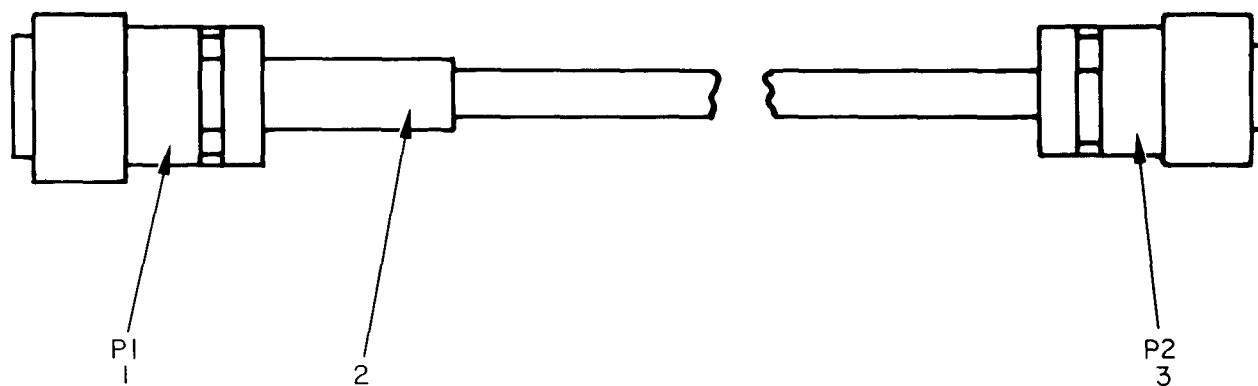


NOTE: PREFIX ALL REFERENCE DESIGNATIONS WITH W9.

ELIDR008

Figure 7. Cable Assembly, Special Purpose, Electrical CX-9003/URM-157.

SECTION II		TM11-6625-622-34P						
(1)	(2)	(3)	(4)	(5)	(6)	(7)	(8)	
ILLUSTRATION							QTY	
(A)	(B)	NATIONAL			DESCRIPTION		INC	
FIG	ITEM	STOCK	PART	FSCM		USABLE ON CODE	IN	
NO	NO	NUMBER	NUMBER			U/M	UNIT	
					GROUP 06 CABLE ASSEMBLY, SPECIAL PURPOSE, ELECTRICAL CX-9003/URM-157			
7	1	PAHZZ 5935-00-880-3986	DM9702-37SW3057-12A	11139	CONNECTOR, PLUG, ELECTRICAL	EA	1	
7	2	PAHZZ 5365-00-663-2125	AN3420-10	88044	BUSHING, CABLE	EA	2	
7	3	XDHZZ	PT06A20-41PSR	77820	CONNECTOR, PLUG, ELECTRICAL	EA	1	



NOTE: PREFIX ALL REFERENCE DESIGNATIONS WITH W10.

ELIDR009

Figure 8. Cable Assembly, Special Purpose, Electrical CX-9004/URM-157.

SECTION II		TM11-6625-622-34P						
(1)	(2)	(3)	(4)	(5)	(6)	(7)	(8)	
ILLUSTRATION					DESCRIPTION		QTY	
(A)	(B)	NATIONAL	PART	FSCM		USABLE ON CODE	INC	
FIG	ITEM	STOCK	NUMBER			U/M	IN	
NO	NO	NUMBER	NUMBER				UNIT	
					GROUP 07 CABLE ASSEMBLY,SPECIAL PURPOSE, ELECTRICAL CX-9004/URM-157			
8	1	XDHZZ		PT06A20-41PSR	77820		EA 1	
8	2	PAHZZ	5365-00-663-2125	AN3420-10	88044		EA 1	
8	3	PAHZZ	5935-00-060-2441	PB06A16-26SSR	77820		EA 1	

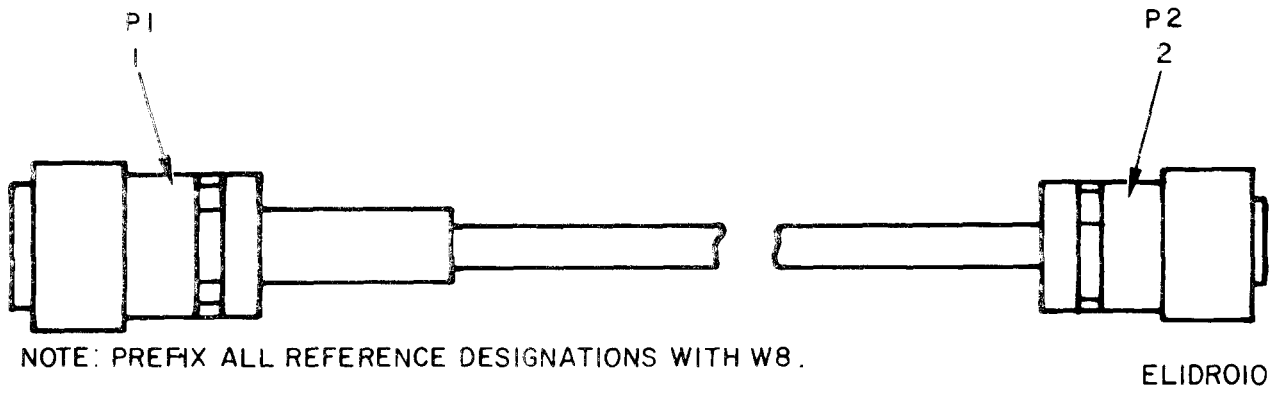
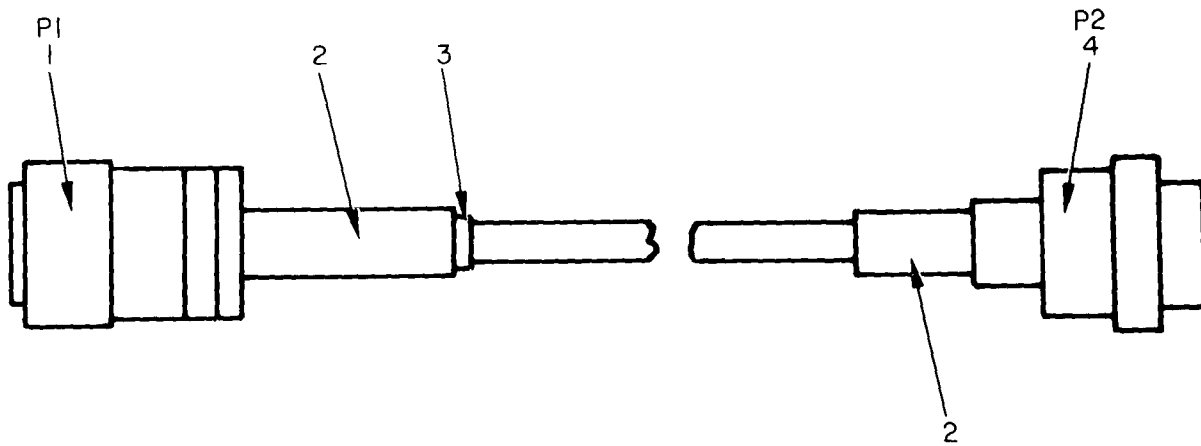


Figure 9. Cable Assembly, Special Purpose, Electrical CX-9002/URM-157.



SECTION II		TM11-6625-622-34P					
(1)	(2)	(3)	(4)	(5)	(6)	(7)	(8)
ILLUSTRATION							QTY
(A)	(B)	NATIONAL	PART	DESCRIPTION		USABLE ON CODE	INC
FIG	ITEM	STOCK	NUMBER	FSCM		U/M	IN
NO	NO	CODE	NUMBER				UNIT
					GROUP 08 CABLE ASSEMBLY, SPECIAL PURPOSE, ELECTRICAL CX-9002/URM-157		
9	1	XDHZZ	PT06A20-41PSR	77820	CONNECTOR, PLUG, ELECTRICAL	EA	1
9	2	XDHZZ	PT06A20-39SSR	77820	CONNECTOR, PLUG, ELECTRICAL	EA	1

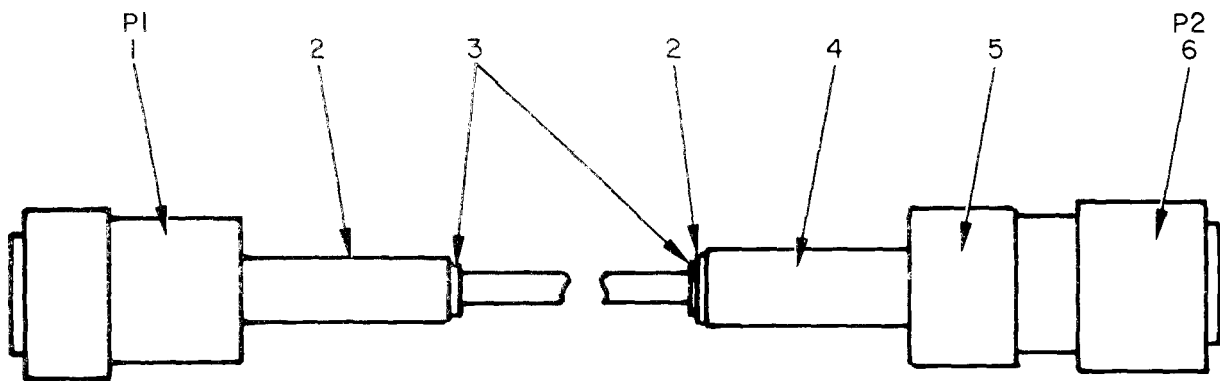


NOTE: PREFIX ALL REFERENCE DESIGNATIONS WITH W11.

ELIDRO11

Figure 10. Cable Assembly, Special Purpose, Electrical CX-9005/URM-157.

SECTION II (1) ILLUSTRATION (A) (B) FIG ITEM NO NO		(2) SMR CODE	(3) NATIONAL STOCK NUMBER	(4) PART NUMBER	(5) FSCM	TM11-6625-622-34P (6) DESCRIPTION	USABLE ON CODE	(7) U/M	(8) QTY INC IN UNIT
						GROUP 09 CABLE ASSEMBLY, SPECIAL PURPOSE, ELECTRICAL CX-9005/URM-157			
10	1	XDHZZ		PT06A20-41PSR	77820	CONNECTOR, PLUG, ELECTRICAL		EA	1
10	2	PAHZZ	5365-00-141-6944	AN3420-8	88044	BUSHING, CABLE		EA	2
10	3	PAHZZ	5365-00-663-2125	AN3420-10	88044	BUSHING, CABLE		EA	1
10	4	PAHZZ	5935-00-665-8032	SKC16-21C1-2	71468	CONNECTOR, PLUG, ELECTRICAL		EA	1



NOTE: PREFIX ALL REFERENCE DESIGNATIONS WITH W13.

ELIDRO12

Figure 11. Cable Assembly, Special Purpose, Electrical CX-9006/URM-157.

SECTION II		TM11-6625-622-34P					
(1)	(2)	(3)	(4)	(5)	(6)	(7)	(8)
ILLUSTRATION							QTY
(A)	(B)	NATIONAL			DESCRIPTION		INC
FIG	ITEM	STOCK	PART	FSCM		USABLE ON CODE	IN
NO	NO	NUMBER	NUMBER				UNIT
		SMR					
		CODE					
					GROUP 10 CABLE ASSEMBLY,SPECIAL PURPOSE,		
					ELECTRICAL CX-9006/URM-157		
11	1	XDHZZ		PT06A20-41PSR	77820		EA 1
11	2	PAHZZ	5365-00-663-2125	AN3420-10	88044		EA 2
11	3	PAHZZ	5310-00-141-6944	AN3420-8	88044		EA 2
11	4	PAHZZ	5340-00-598-5287	AN3420-12	88044		EA 1
11	5	PAHZZ	5935-00-223-0572	MS3057-12A	96906		EA 1
11	6	XDHZZ		MS3106A20-29S	96906		EA 1

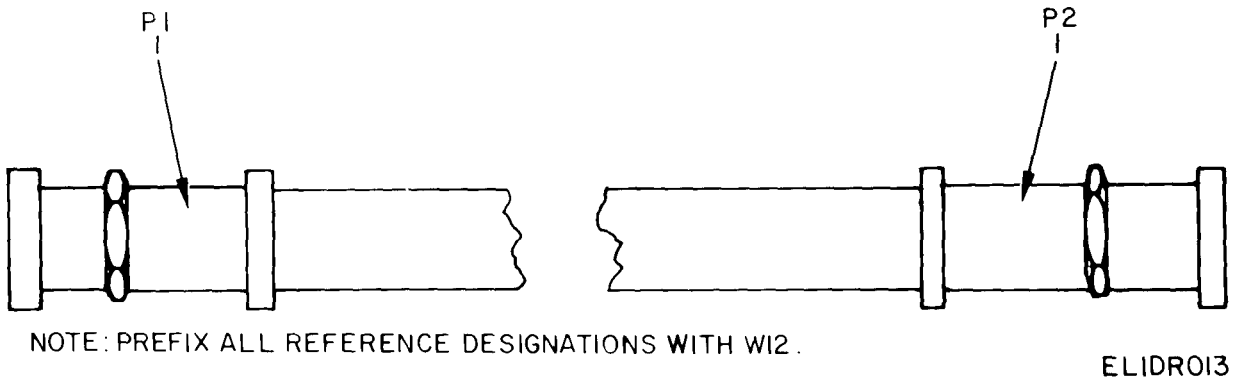
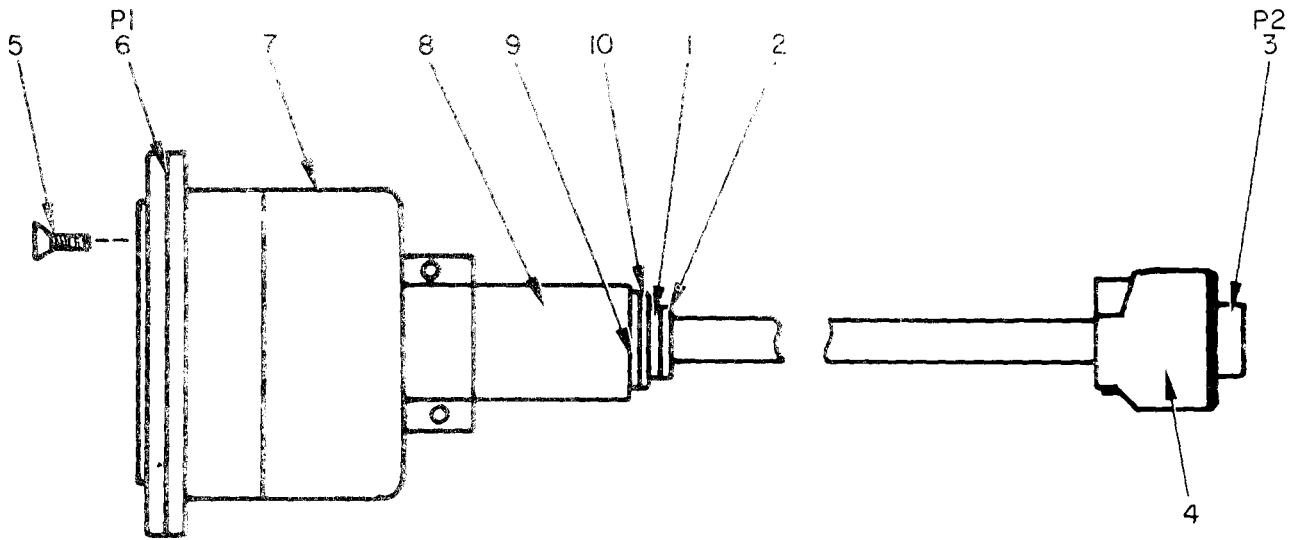


Figure 12. Cable Assembly, Radio Frequency CG-2727/U.

SECTION II		TM11-6625-622-34P					
(1)	(2)	(3)	(4)	(5)	(6)	(7)	(8)
ILLUSTRATION							QTY
(A)	(B)	NATIONAL			DESCRIPTION		INC
FIG	ITEM	STOCK	PART	FSCM		USABLE ON CODE	IN
NO	NO	NUMBER	NUMBER			U/M	UNIT
					GROUP 11 CABLE ASSEMBLY,RADIO FREQUENCY		
					CG-2727/U		
12	1	PAHZZ	5935-00-823-0487	UG88EU	80058	CONNECTOR,PLUG,ELECTRICAL	EA 2



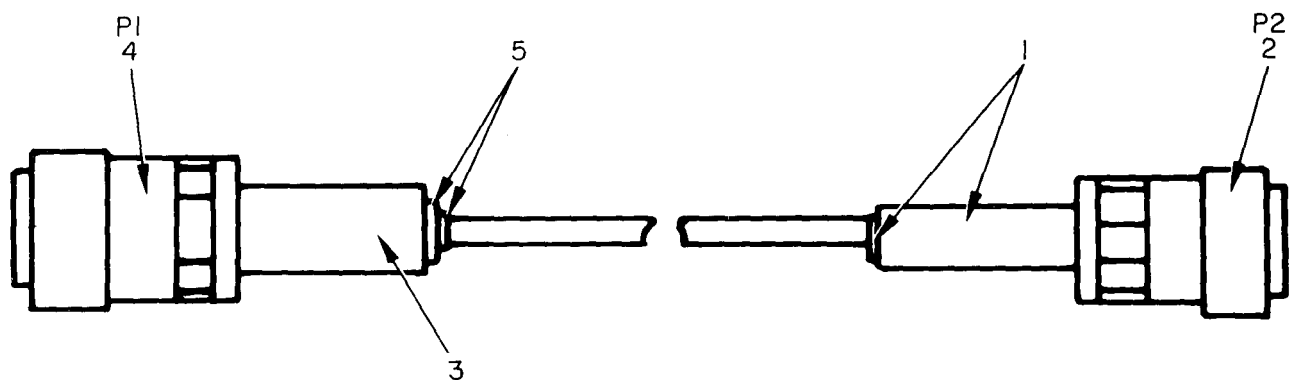
NOTE: PREFIX ALL REFERENCE DESIGNATIONS WITH W16.

ELIDRO14

Figure 13. Cable Assembly, Special Purpose, Electrical CX-11046/URM-157.



SECTION II		TM11-6625-622-34P					
(1)	(2)	(3)	(4)	(5)	(6)	(7)	(8)
ILLUSTRATION							QTY
(A)	(B)	NATIONAL			DESCRIPTION		INC
FIG	ITEM	STOCK	PART	FSCM		USABLE ON CODE	IN
NO	NO	NUMBER	NUMBER				UNIT
					GROUP 12 CABLE ASSEMBLY,SPECIAL PURPOSE, ELECTRICAL CX-11046/URM-157		
13	1	PAHZZ	5340-00-598-5287	AN3420-12	88044	BUSHING, CABLE	EA 1
13	2	XDHZZ	5365-00-598-5379	AN3420-16A	88044	BUSHING, CABLE	EA 1
13	3	PAHZZ	5935-00-951-8986	DEMM9S	71468	CONNECTOR, RECEPTACLE, ELECTRICAL	EA 1
13	4	PAHZZ	5935-00-590-6997	DE51218-1	71468	SHIELD, ELECTRICAL CONNECTOR	EA 1
13	5	PAHZZ	5305-00-763-6963	MS51959-28	96906	SCREW, MACHINE	EA 4
13	6	PAHZZ	5935-00-581-3086	DPD23HV1-34P2V	71468	CONNECTOR, RECEPTACLE, ELECTRICAL	EA 1
13	7	PAHZZ	5935-00-610-0940	DPD347-8A101	71468	SHIELD, ELECTRICAL CONNECTOR	EA 1
13	8	PAHZZ	5365-00-820-4535	AN3420-6	88044	BUSHING, CABLE	EA 1
13	9	PAHZZ	5365-00-141-6944	AN3420-8	88044	BUSHING, CABLE	EA 1
13	10	PAHZZ	5365-00-663-2125	AN3420-10	88044	BUSHING, CABLE	EA 1



NOTE: PREFIX ALL REFERENCE DESIGNATIONS WITH W18.

ELIDRO15

Figure 14. Cable Assembly, Special Purpose, Electrical CX-10594/URM-157.

SECTION II		TM11-6625-622-34P					
(1)	(2)	(3)	(4)	(5)	(6)	(7)	(8)
ILLUSTRATION							QTY
(A)	(B)	NATIONAL			DESCRIPTION		INC
FIG	ITEM	STOCK	PART	FSCM		USABLE ON CODE	IN
NO	NO	NUMBER	NUMBER			U/M	UNIT
					GROUP 13 CABLE ASSEMBLY, SPECIAL PURPOSE, ELECTRICAL CX-10594/URM-157		
14	1	PAHZZ 5365-00-141-6944	AN3420-8	88044	BUSHING, CABLE		EA 2
14	2	XDHZZ	PT06A16-26SSR	77820	CONNECTOR, PLUG, ELECTRICAL		EA 1
14	3	PAHZZ 5365-00-663-2125	AN3420-10	88044	BUSHING, CABLE		EA 1
14	4	XDHZZ	PT06A20-41PSR	77820	CONNECTOR, PLUG, ELECTRICAL		EA 1
14	5	PAHZZ 5365-00-820-4535	AN3420-6	88044	BUSHING, CABLE		EA 2

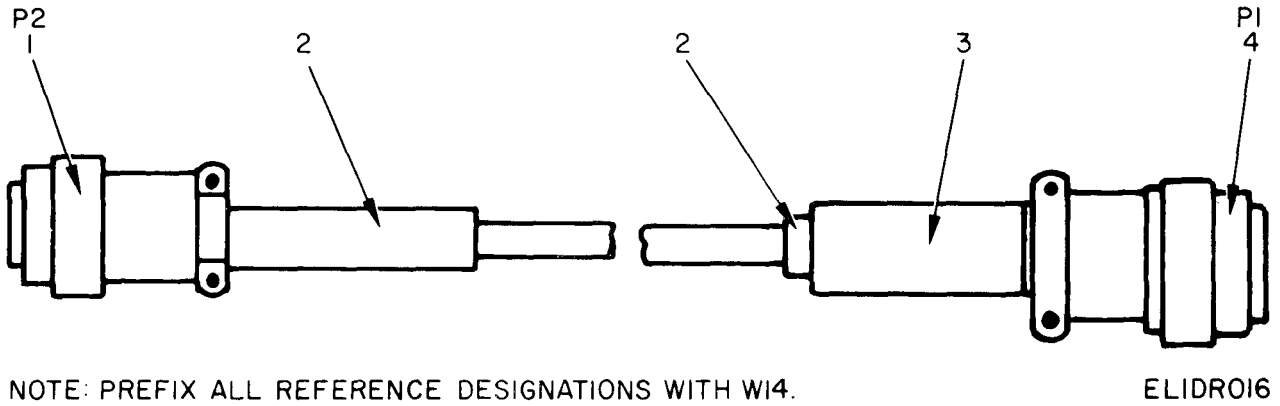
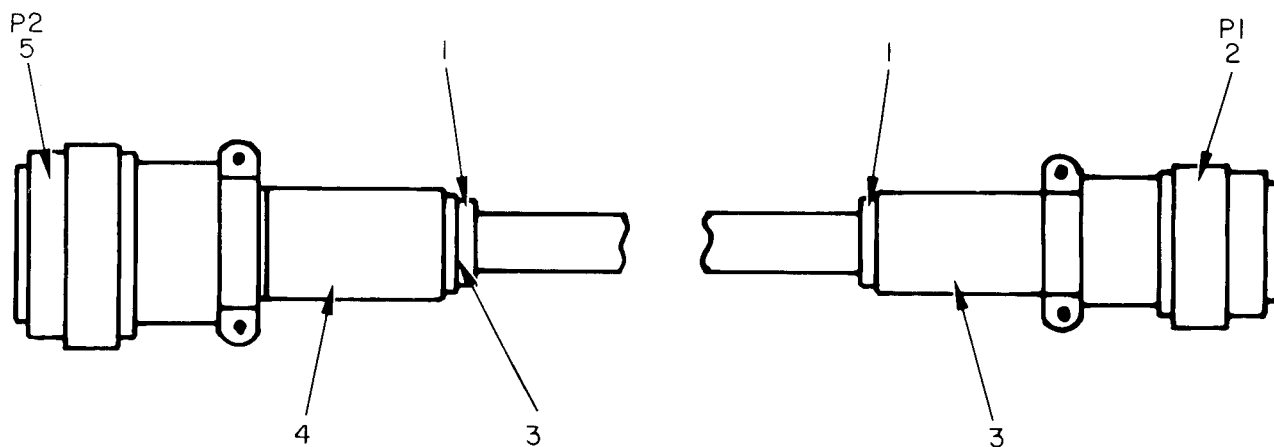


Figure 15. Cable Assembly, Special Purpose, Electrical CX-11045/URM-157.

SECTION II		TM11-6625-622-34P					
(1)	(2)	(3)	(4)	(5)	(6)	(7)	(8)
ILLUSTRATION							QTY
(A)	(B)	NATIONAL			DESCRIPTION		INC
FIG	ITEM	STOCK	PART	FSCM		USABLE ON CODE	IN
NO	NO	NUMBER	NUMBER				UNIT
					GROUP 14 CABLE ASSEMBLY, SPECIAL PURPOSE, ELECTRICAL CX-11045/URM-157		
15	1	PAHZZ 5935-00-835-4959	BT06AC14-18S	09922	CONNECTOR, PLUG, ELECTRICAL		EA 1
15	2	PAHZZ 5365-00-141-6944	AN3420-8	88044	BUSHING, CABLE		EA 2
15	3	PAHZZ 5365-00-663-2125	AN3420-10	88044	BUSHING, CABLE		EA 1
15	4	XDHZZ	PT06A20-41PSR	77820	CONNECTOR, PLUG, ELECTRICAL		EA 1

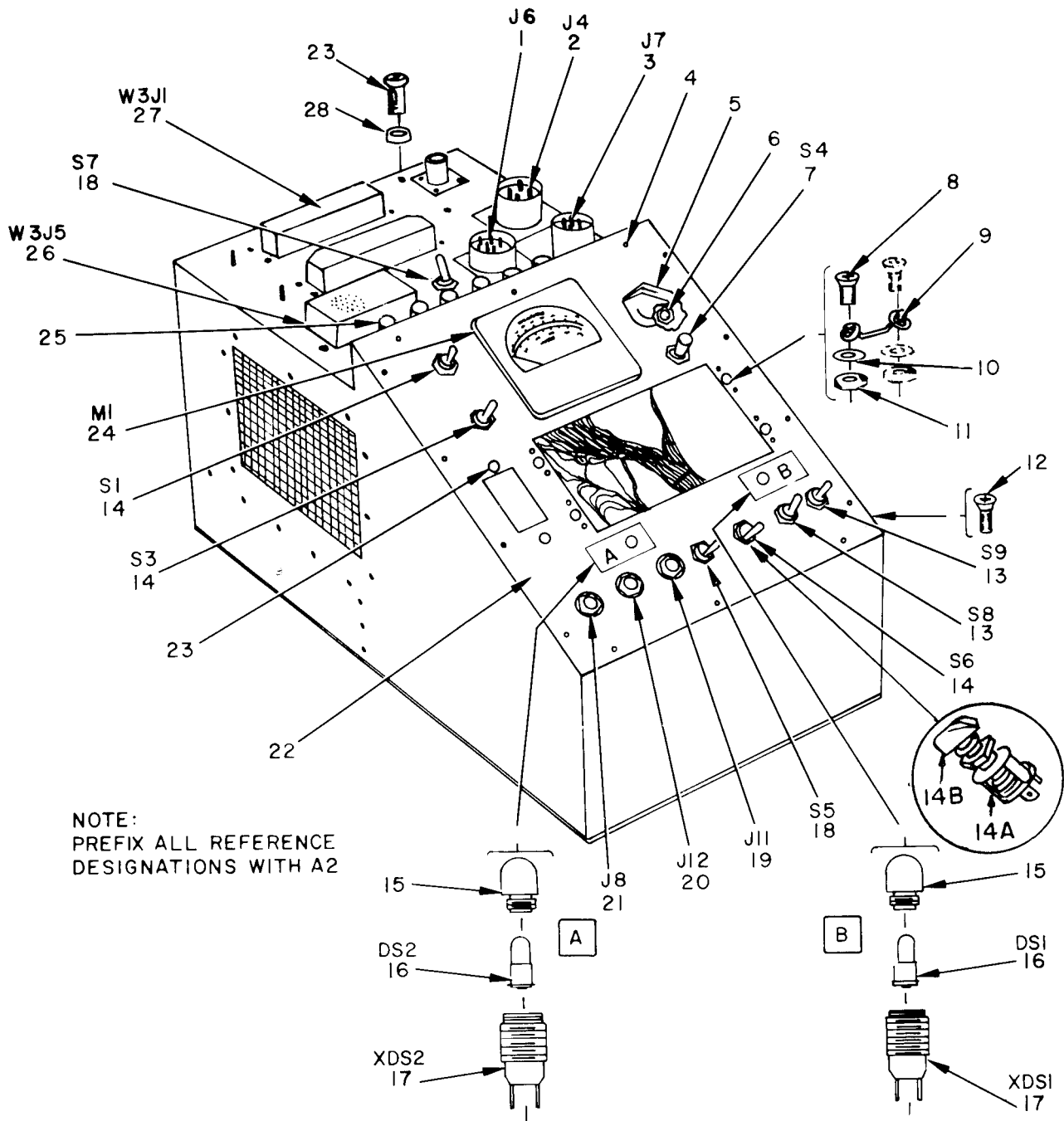


NOTE: PREFIX ALL REFERENCE DESIGNATIONS WITH W15.

ELIDR017

Figure 16. Cable Assembly, Special Purpose, Electrical CX-11044/URM-157.

SECTION II		TM11-6625-622-34P					
(1)	(2)	(3)	(4)	(5)	(6)	(7)	(8)
ILLUSTRATION							QTY
(A)	(B)	NATIONAL			DESCRIPTION		INC
FIG	ITEM	STOCK	PART	FSCM		USABLE ON CODE	IN
NO	NO	NUMBER	NUMBER			U/M	UNIT
					GROUP 15 CABLE ASSEMBLY, SPECIAL PURPOSE, ELECTRICAL CX-11044/URM-157		
16	1	PAHZZ	5365-00-663-2125	AN3420-10	88044	BUSHING, CABLE	EA 2
16	2	XDHZZ		PT06A20-41PSR	77820	CONNECTOR, PLUG, ELECTRICAL	EA 1
16	3	PAHZZ	5365-00-141-6944	AN3420-8	88044	BUSHING, CABLE	EA 2
16	4	PAHZZ	5340-00-598-5287	AN3420-12	88044	BUSHING, CABLE	EA 1
16	5	XDHZZ		PT06A22-55SSR	77820	CONNECTOR, PLUG, ELECTRICAL	EA 1



ELIDRO18

Figure 17. Test Harness Subassembly TS-1949/URM157 and TS-1949A/URM-157.



SECTION II						TM11-6625-622-34P		
(1)	(2)	(3)	(4)	(5)	(6)	(7)	(8)	
ILLUSTRATION								
(A)	(B)	NATIONAL			DESCRIPTION		QTY	
FIG	ITEM	STOCK	PART	FSCM		USABLE ON CODE	INC	
NO	NO	NUMBER	NUMBER				IN	
							UNIT	
					GROUP 16 TEST HARNESS SUBASSEMBLY			
					TS-1949/URM-157 AND TS-1949A/URM-157			
17	1	PAHZZ	5935-00-617-5386	PT02A20-41S	77820		EA 1	
17	2	PAHZZ	5935-00-804-5816	MS3102R22-22P	96906		EA 1	
17	3	PAHZZ	5935-00-801-6617	MS3102R18-4P	96906		EA 1	
17	4	PAHZZ	5305-00-770-2533	MS51959-13	96906		EA 14	
17	5	PAOZZ	5355-00-971-0588	543-8039-000	13499		EA 1	
17	6	PAHZZ	5310-00-088-1180	P313-0062-000	77250		EA 1	
17	7	PAHZZ	5930-00-636-1584	1GA19A1	24446		EA 1	
17	8	PAHZZ	5305-00-764-2964	MS51959-4	96906		EA 8	
17	9	PAHZZ	5325-00-780-3430	PB31-2	72794		EA 4	
17	10	XDHZZ		504-0706-003	13499		EA 8	
17	11	PAHZZ	5310-00-622-1724	68-1660-26	72962		EA 8	
17	12	PAHZZ	5305-00-768-0336	MS51959-17	96906		EA 4	
17	13	PAHZZ	5930-00-655-1523	MS35058-31	96906		EA 2	
17	14	PAHZZ	5930-00-615-7883	7663K5	15605	CYA	EA 2	
17	14	PAHZZ	5930-00-615-7883	7663K5	15605	2AD	EA 3	
17	14A	PAHZZ	5930-00-491-2508	268482A2	76854	CYA	EA 1	
17	14B	PAOZZ	5355-00-645-5571	2250	83330	CYA	EA 1	
17	15	PAOZZ	6210-00-813-6642	162-0975	72619	CYA	EA 2	
17	16	PAOZZ	6240-00-155-7836	MS25237-327	96906	CYA	EA 2	
17	17	PAHZZ	6210-00-813-8265	162-8430-9	72619	CYA	EA 2	
17	18	PAHZZ	5930-00-655-1514	ST42A	09504		EA 2	
17	19	PAHZZ	5935-00-087-6257	2J568A	82389		EA 1	
17	20	PAHZZ	5935-00-192-4729	JJ033	81349		EA 1	
17	21	XDHZZ		2J1569	82389		EA 1	
17	22	PAHZZ	6625-00-437-2130	778-3326-001	13499		EA 1	
17	23	PAHZZ	5305-00-054-6649	MS51957-25	96906		EA 6	
17	24	PAHZZ	6625-00-060-2880	530-6-15	82386		EA 1	
17	25	PAHZZ	5940-00-269-2219	DF30BC	58474		EA 1	
17	26	PAHZZ	5935-00-295-3056	DPD23HV1-33S2V	71468		EA 1	
17	27	PAHZZ	5935-00-061-7747	DPE60-33SA101	71468		EA 1	
17	28	XDHZZ		310-0078-000	79807		EA 4	

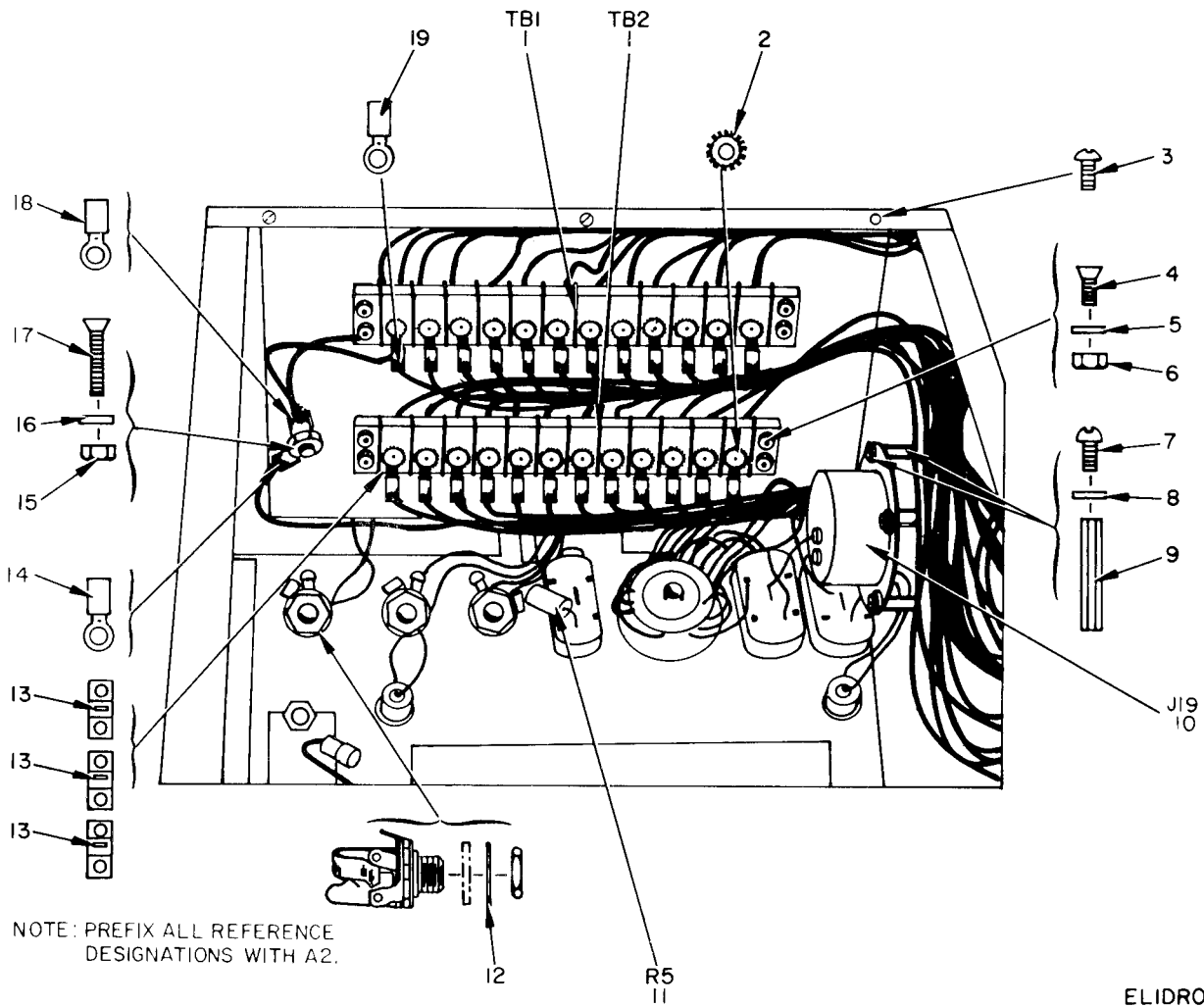
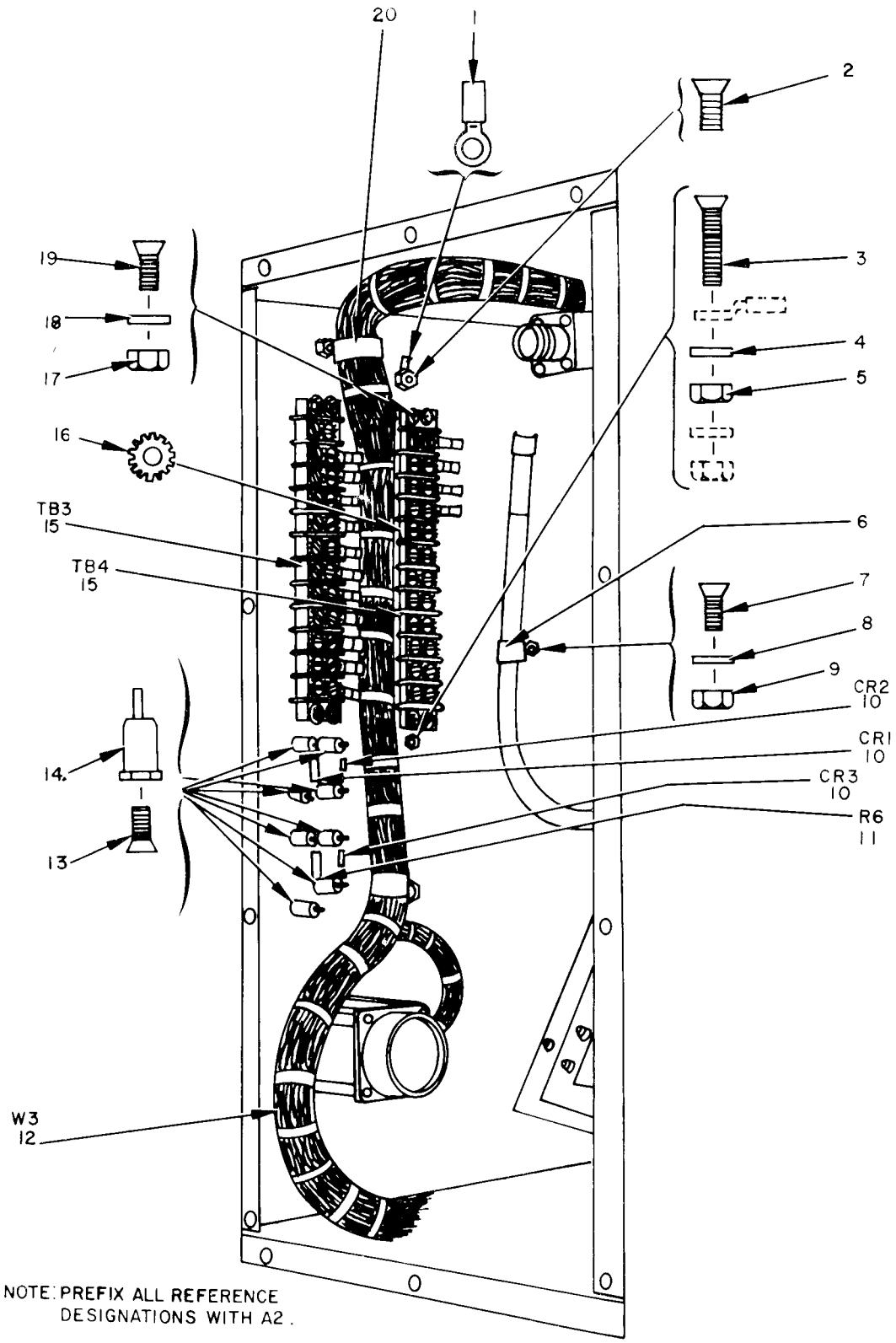


Figure 18. Test Harness Subassembly TS-1949/URM-157 and TS-1949A/URM-157, Inside Top Cover.

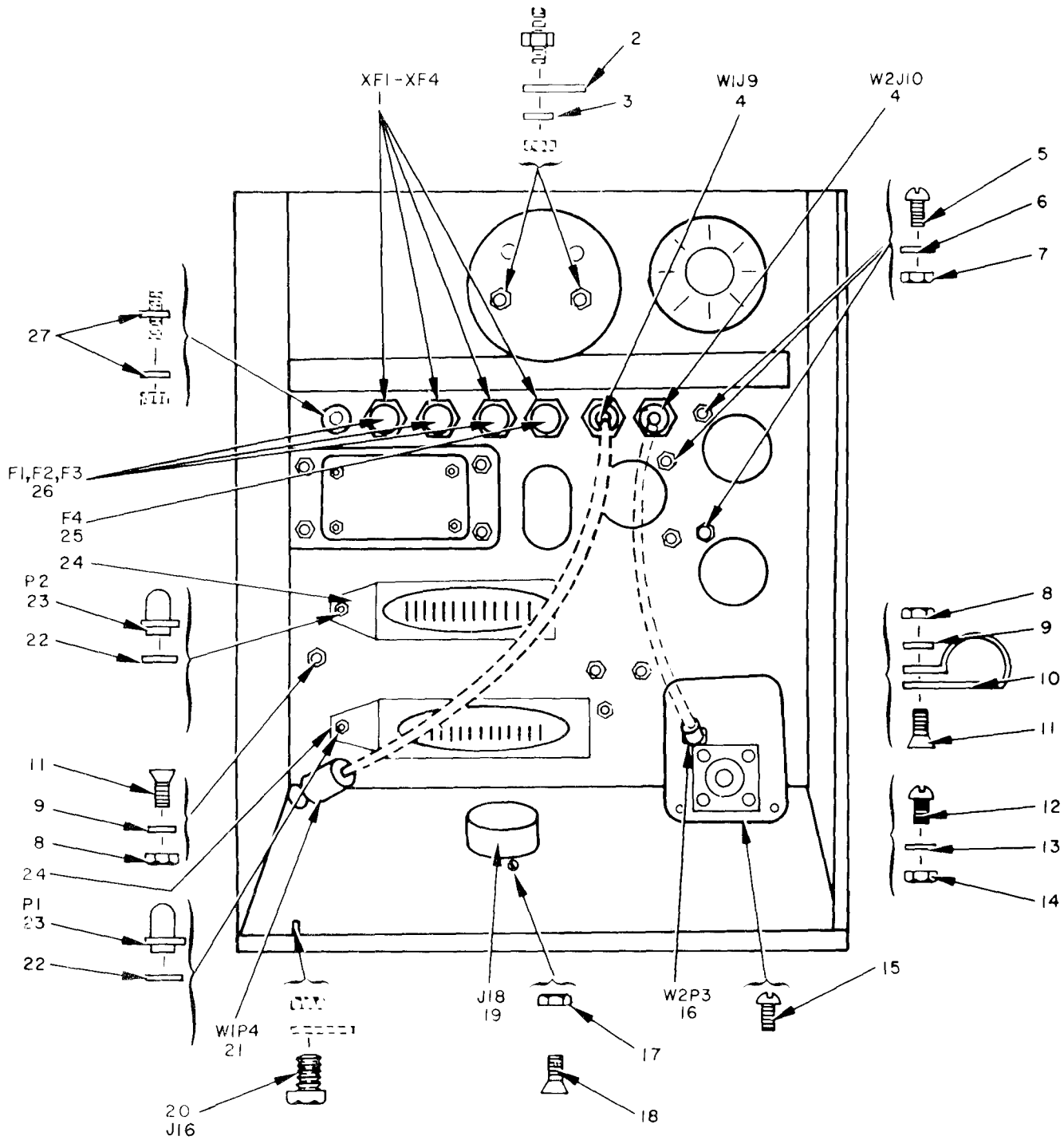
SECTION II		TM11-6625-622-34P						
(1)	(2)	(3)	(4)	(5)	(6)	(7)	(8)	
ILLUSTRATION							QTY	
(A)	(B)	NATIONAL	PART	FSCM	DESCRIPTION	USABLE ON CODE	INC	
FIG	ITEM	STOCK	NUMBER				IN	
NO	NO	NUMBER					UNIT	
18	1	XDHZZ	12-140D	71785	TERMINAL BOARD	EA	2	
18	2	PAHZZ	5310-00-058-7988	310-0281-000	79807	WASHER, LOCK	EA 48	
18	3	PAHZZ	5305-00-768-0336	MS51959-17	96906	SCREW, MACHINE	EA 8	
18	4	PAHZZ	5305-00-206-6867	P323-0300-010	77250	SCREW, MACHINE	EA 8	
18	5	XDHZZ	502-1515-002	502-1515-002	13499	WASHER	EA 8	
18	6	PAHZZ	5310-00-614-3500	68-1660-40	72962	NUT, SELF-LOCKING, HEXAGON	EA 8	
18	7	PAHZZ	5305-00-054-5647	MS51957-13	96906	SCREW, MACHINE	EA 4	
18	8	PAHZZ	5310-00-184-8996	310-0396-000	79807	WASHER, LOCK	EA 4	
18	9	PAHZZ	5310-00-754-3071	540-9053-003	13499	POST, HEXAGON	EA 4	
18	10	PAHZZ	5935-00-617-5386	PT02A20-41S	77820	CONNECTOR, RECEPTACLE, ELECTRICAL	EA 1	
18	11	PAHZZ	5905-00-279-2545	RC32GF301J	81349	RESISTOR, FIXED, COMPOSITION	EA 1	
18	12	XDHZZ	302-1600-000	302-1600-000	74921	WASHER, SHOULDERED	EA 4	
18	13	PAHZZ	5940-00-632-7234	600J	75382	JUMPER, TERMINAL BOARD	EA 3	
18	14	XDHZZ	553-7216-002	553-7216-002	13499	TERMINAL, LUG	EA 2	
18	15	PAHZZ	5310-00-527-4089	P313-0046-000	77250	NUT, PLAIN, HEXAGON	EA 2	
18	16	PAHZZ	5310-00-209-1581	310-0397-000	79807	WASHER, LOCK	EA 2	
18	17	PAHZZ	5305-00-764-0071	MS51959-47	96906	SCREW, MACHINE	EA 2	
18	18	XDHZZ	31891	31891	00779	TERMINAL, LUG	EA 1	
18	19	PAHZZ	5940-00-503-6764	31881	00779	TERMINAL, LUG	EA 87	



ELIDR020

Figure 19. Test Harness Subassembly TS-1949/URM-157 and TS-1949A/URM-157, Interior View.

SECTION II		TM11-6625-622-34P						
(1)	(2)	(3)	(4)	(5)	(6)	(7)	(8)	
ILLUSTRATION							QTY	
(A)	(B)	NATIONAL	PART		DESCRIPTION	USABLE ON CODE	INC	
FIG	ITEM	STOCK	NUMBER	FSCM			IN	
NO	NO	NUMBER	NUMBER				UNIT	
19	1	PAHZZ 5940-00-660-3631	MS25036-50	96906	TERMINAL, LUG		EA 1	
19	2	PAHZZ 5305-00-764-0070	MS51959-46	96906	SCREW, MACHINE		EA 1	
19	3	PAHZZ 5305-00-054-6672	MS51957-47	96906	SCREW, MACHINE		EA 1	
19	4	PAHZZ 5310-00-209-1581	310-0397-000	79807	WASHER, LOCK		EA 4	
19	5	PAHZZ 5310-00-527-4089	P313-0046-000	77250	NUT, PLAIN, HEXAGON		EA 4	
19	6	XDHZZ	HP7N	09922	CLAMP, LOOP		EA 1	
19	7	PAHZZ 5305-00-763-6962	MS51959-27	96906	SCREW, MACHINE		EA 3	
19	8	XDHZZ	310-0046-000	79807	WASHER, FLAT		EA 1	
19	9	XDHZZ	68NM62	72962	NUT, SELF-LOCKING, HEXAGON		EA 3	
19	10	XDHZZ	1N645	07688	SEMICONDUCTOR DEVICE, DIODE		EA 3	
19	11	PAHZZ 5905-00-923-4229	RSM2B14500H	91637	RESISTOR, FIXED, WIRE WOUND		EA 1	
19	12	XDHZZ	548-8015-000	13499	WIRING HARNESS		EA 1	
19	13	PAHZZ 5305-00-777-6039	MS51959-12	96906	SCREW, MACHINE		EA 8	
19	14	PAHZZ 5940-00-259-8457	RTMT12M	91663	TERMINAL, STUD		EA 8	
19	15	XDHZZ	12-140D	71785	TERMINAL BOARD		EA 2	
19	16	PAHZZ 5310-00-058-7988	310-0281-000	79807	WASHER, LOCK		EA 48	
19	17	PAHZZ 5310-00-614-3500	68-1660-40	72962	NUT, SELF LOCKING, HEXAGON		EA 8	
19	18	XDHZZ	502-1515-002	13499	WASHER		EA 8	
19	19	PAHZZ 5305-00-768-0336	MS51959-17	96906	SCREW, MACHINE		EA 8	
19	20	PAHZZ 5340-00-336-8164	HP10N	09922	CLAMP, LOOP		EA 1	

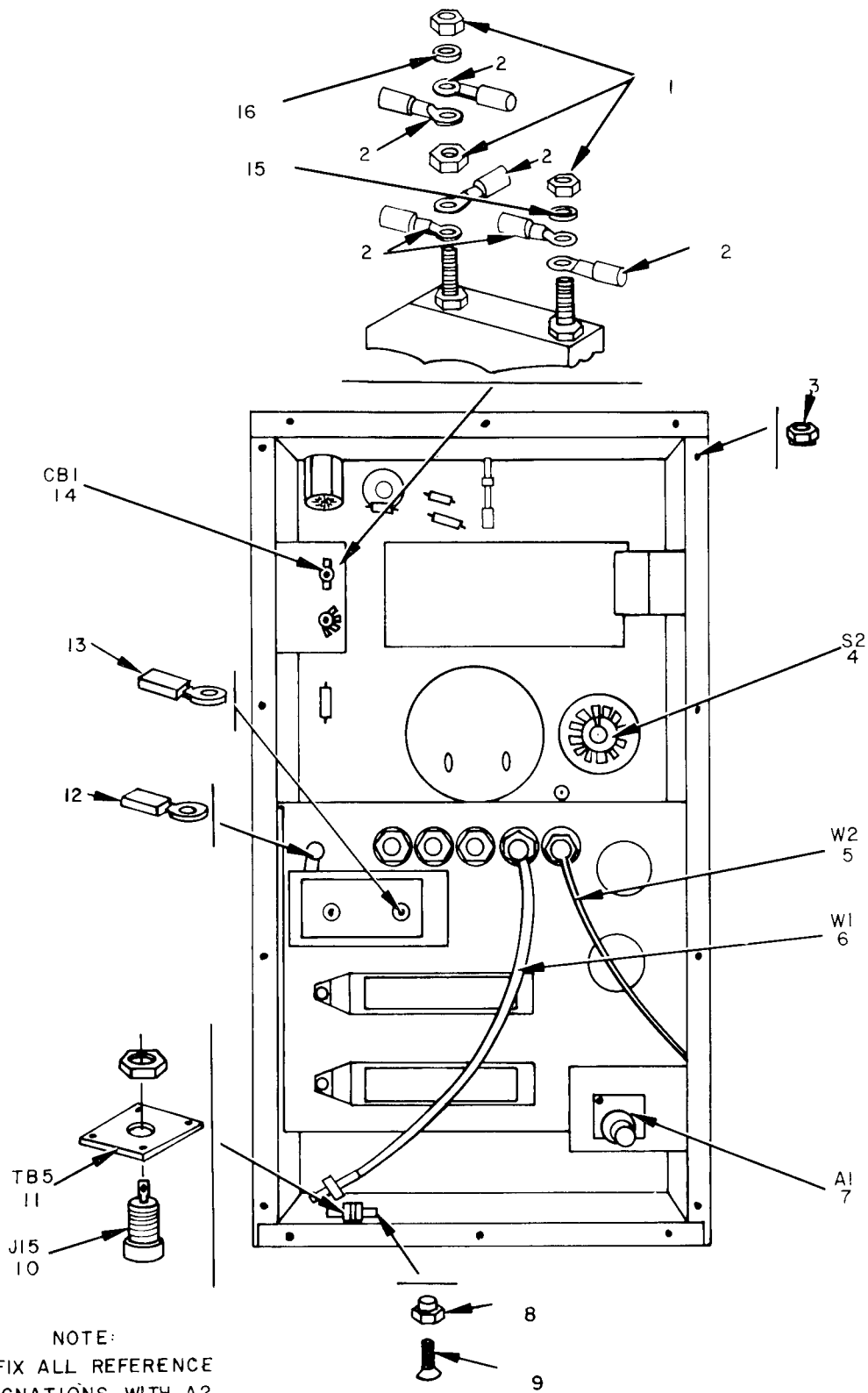


NOTE: PREFIX ALL REFERENCE DESIGNATIONS WITH A2.

ELIDRO21

Figure 20. Test Harness Subassembly TS-1949/URM-157 and TS-1949A/URM-157, Bottom View.

SECTION II		TM11-6625-622-34P						
(1)	(2)	(3)	(4)	(5)	(6)	(7)	(8)	
ILLUSTRATION								
(A)	(B)	NATIONAL	PART		DESCRIPTION		QTY	
FIG	ITEM	STOCK	NUMBER	FSCM		USABLE ON CODE	INC	
NO	NO	NUMBER					IN	
							UNIT	
20	1		HKPHJRZZ	71400	FUSEHOLDER		EA 4	
20	2		4012HOTTINNED	77147	TERMINAL, LUG		EA 2	
20	3		1914-0	78189	WASHER, LOCK		EA 1	
20	4	5935-00-850-8876	100B3000C75	94375	CONNECTOR, RECEPTACLE, ELECTRICAL		EA 2	
20	5	5305-00-054-5648	MS51957-14	96906	SCREW, MACHINE		EA 12	
20	6	5310-00-184-8996	310-0396-000	79807	WASHER, LOCK		EA 12	
20	7	5310-00-934-9748	MS35649-44	96906	NUT, PLAIN, HEXAGON		EA 12	
20	8		68NM62	72962	NUT, SELF-LOCKING, HEXAGON		EA 2	
20	9		310-0046-000	79807	WASHER, FLAT		EA 2	
20	10	5340-00-336-8164	HP10N	09922	CLAMP, LOOP		EA 1	
20	11	5305-00-763-6962	MS51959-27	96906	SCREW, MACHINE		EA 2	
20	12	5305-00-763-6963	MS51959-28	96906	SCREW, MACHINE		EA 12	
20	13		310-0078-000	79807	WASHER, LOCK		EA 12	
20	14	5310-00-208-9457	P313-0045-000	77250	NUT, PLAIN, HEXAGON		EA 12	
20	15		P343-0328-000	77250	SCREW, MACHINE		EA 6	
20	16	5935-00-660-4296	UG536BU	80058	CONNECTOR, PLUG, ELECTRICAL		EA 1	
20	17	5310-00-614-3500	68-1660-40	72962	NUT, SELF LOCKING, HEXAGON		EA 2	
20	18	5305-00-054-5647	MS51957-13	96906	SCREW, MACHINE		EA 2	
20	19	5935-00-178-8077	7468	74545	CONNECTOR, RECEPTACLE, ELECTRICAL		EA 1	
20	20	5935-00-257-9081	108-740	74970	JACK, TELEPHONE		EA 1	
20	21	5935-00-823-0487	UG88EU	80058	CONNECTOR, PLUG, ELECTRICAL		EA 1	
20	22		310-0077-000	79807	WASHER, LOCK		EA 2	
20	23	5999-00-081-5971	546-6864-002	13499	CONTACT, ELECTRICAL		EA 2	
20	24	5940-00-938-0837	548-8026-003	13499	TERMINAL, GROUND		EA 2	
20	25	5920-00-850-6092	F02B32V10AS	81349	FUSE, CARTRIDGE		EA 1	
20	26	5920-00-281-0225	F02A250V6AS	81349	FUSE, CARTRIDGE	CYA	EA 3	
20	26	5920-00-296-0679	F03A250V5A	81349	FUSE, CARTRIDGE	2AD	EA 3	
20	27		310-0080-000	79807	WASHER, LOCK		EA 2	

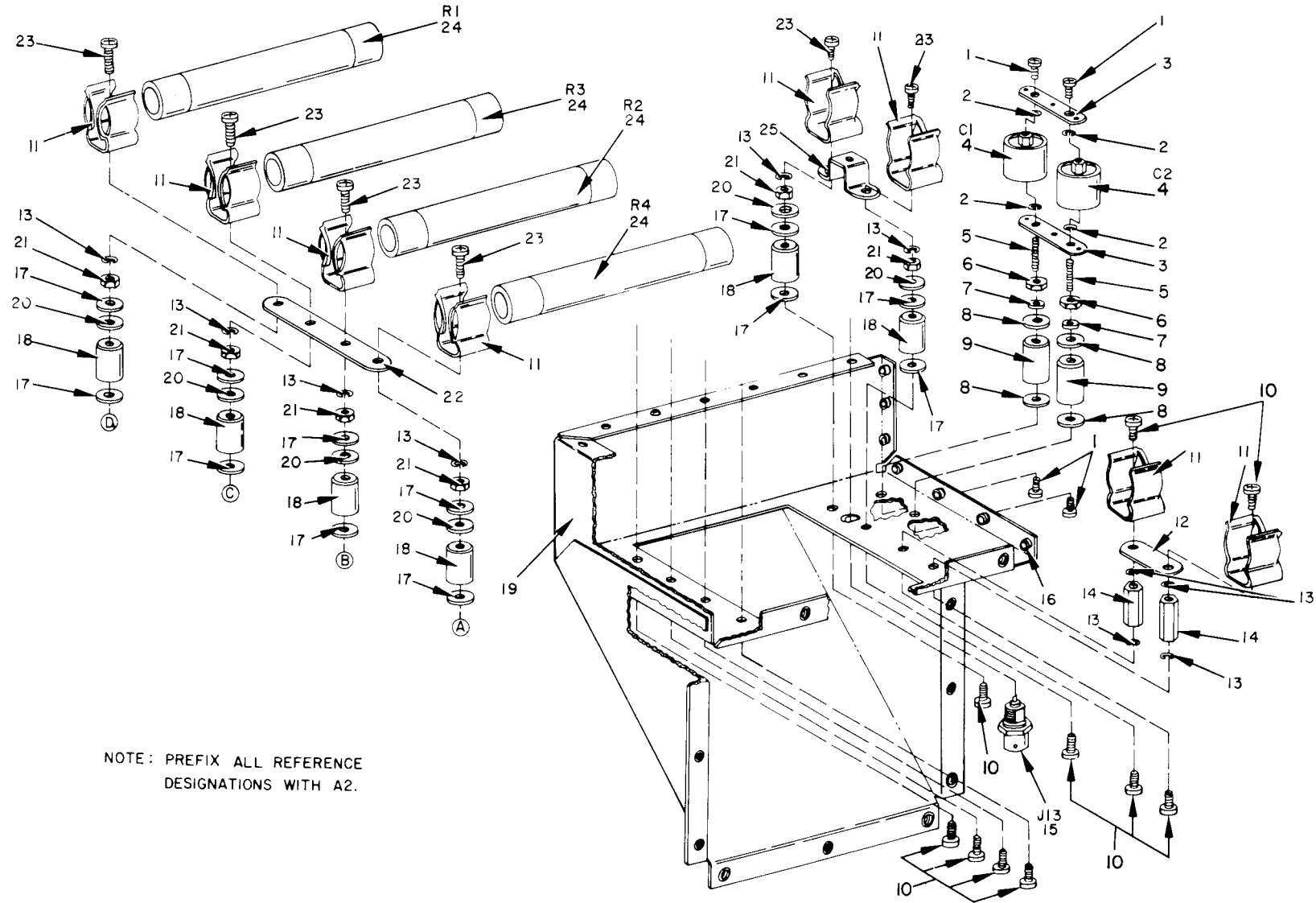


ELIDR022

Figure 21. Test Harness Subassembly TS-1949/URM-157 and TS-1949A/URM-157, Inside Top View.



SECTION II		TM11-6625-622-34P						
(1)	(2)	(3)	(4)	(5)	(6)	(7)	(8)	
ILLUSTRATION							QTY	
(A)	(B)	NATIONAL	PART		DESCRIPTION	USABLE ON CODE	INC	
FIG	ITEM	STOCK	NUMBER	FSCM			IN	
NO	NO	NUMBER	NUMBER				UNIT	
21	1	XDHZZ	P313-0056-000	77250	NUT, PLAIN, HEXAGON	EA	3	
21	2	PAHZZ	5940-00-557-1629	MS25036-49	96906	TERMINAL, LUG	EA 6	
21	3	PAHZZ	5310-00-682-5993	F22NCFMA2-40	72962	NUT, SELF LOCKING, CLINCH	EA 2	
21	4	PAHZZ	5930-00-606-0164	198789H1	76854	SWITCH, ROTARY	EA 1	
21	5	PAHZZ	5995-00-496-8547	548-8021-002	13499	CABLE ASSEMBLY, RADIO FREQUENCY	EA 1	
21	6	XDHHH	5995-00-496-8546	548-8020-002	13499	CABLE ASSEMBLY, RADIO FREQUENCY	EA 1	
21	7	PAHZZ	5985-00-809-5851	543-8118-004	13499	COUPLER, DIRECTIONAL	EA 1	
21	8	PAHZZ	5310-00-622-1724	68-1660-26	72962	NUT, SELF LOCKING, HEXAGON	EA 4	
21	9	PAHZZ	5305-00-764-2964	MS51959-4	96906	SCREW, MACHINE	EA 4	
21	10	PAHZZ	5935-00-803-1445	108-902	74970	JACK, TIP	EA 1	
21	11	XDHZZ		548-8018-002	13499	TERMINAL BOARD	EA 1	
21	12	XDHZZ		553-7217-003	13499	TERMINAL, LUG	EA 1	
21	13	XDHZZ		553-7216-002	13499	TERMINAL, LUG	EA 2	
21	14	PAHZZ	5925-00-929-0871	AM12MG6-45-50DC4	74193	CIRCUIT BREAKER	EA 1	
21	15	XDHZZ		310-0080-000	79807	WASHER, LOCK	EA 2	
21	16	XDHZZ		310-0078-000	79807	WASHER, LOCK	EA 2	

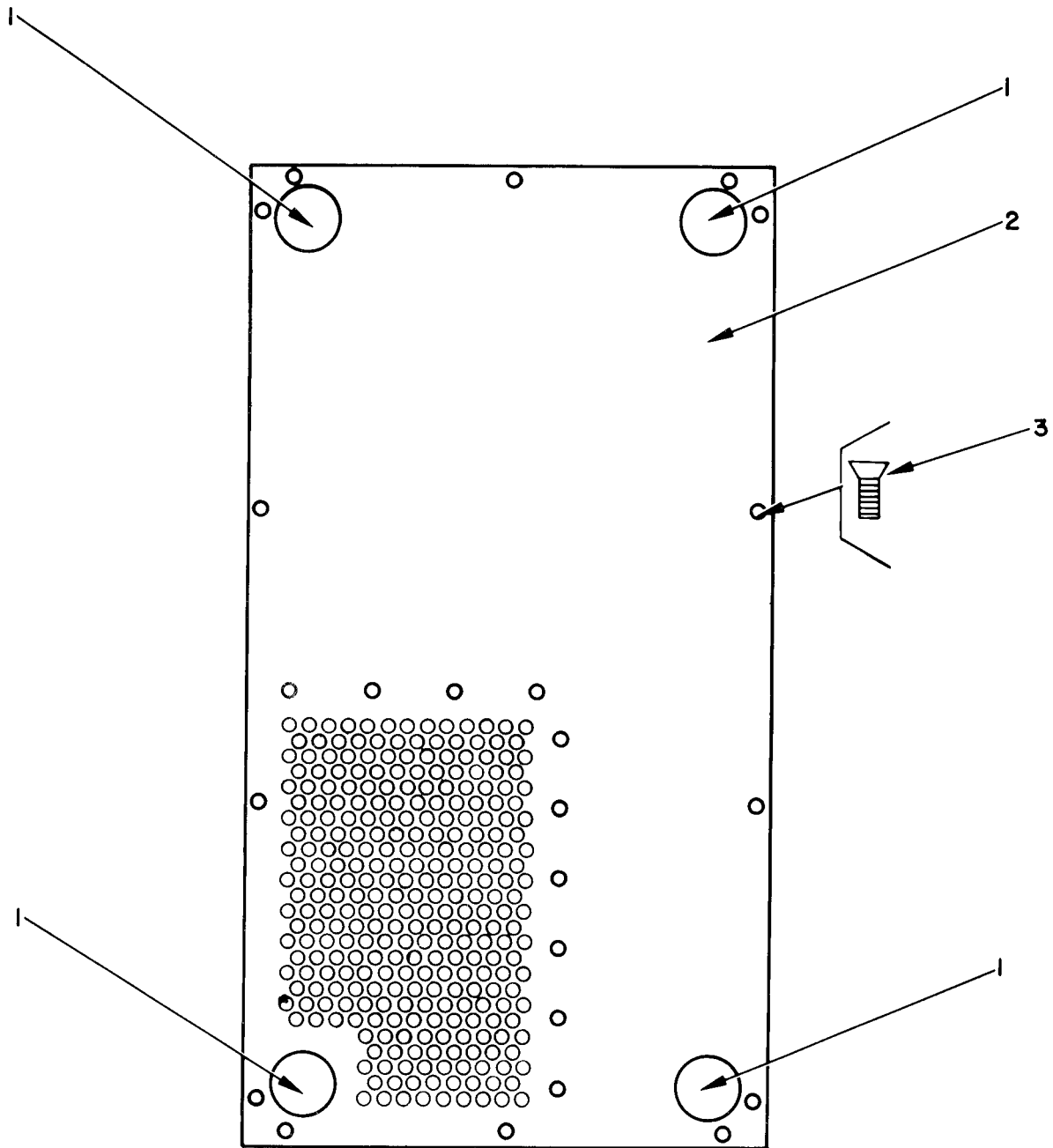


NOTE: PREFIX ALL REFERENCE DESIGNATIONS WITH A2.

ELIDR023

Figure 22. Test Harness Subassembly TS-1949/URM-157 and TS-1949A/URM-157, Dummy Load.

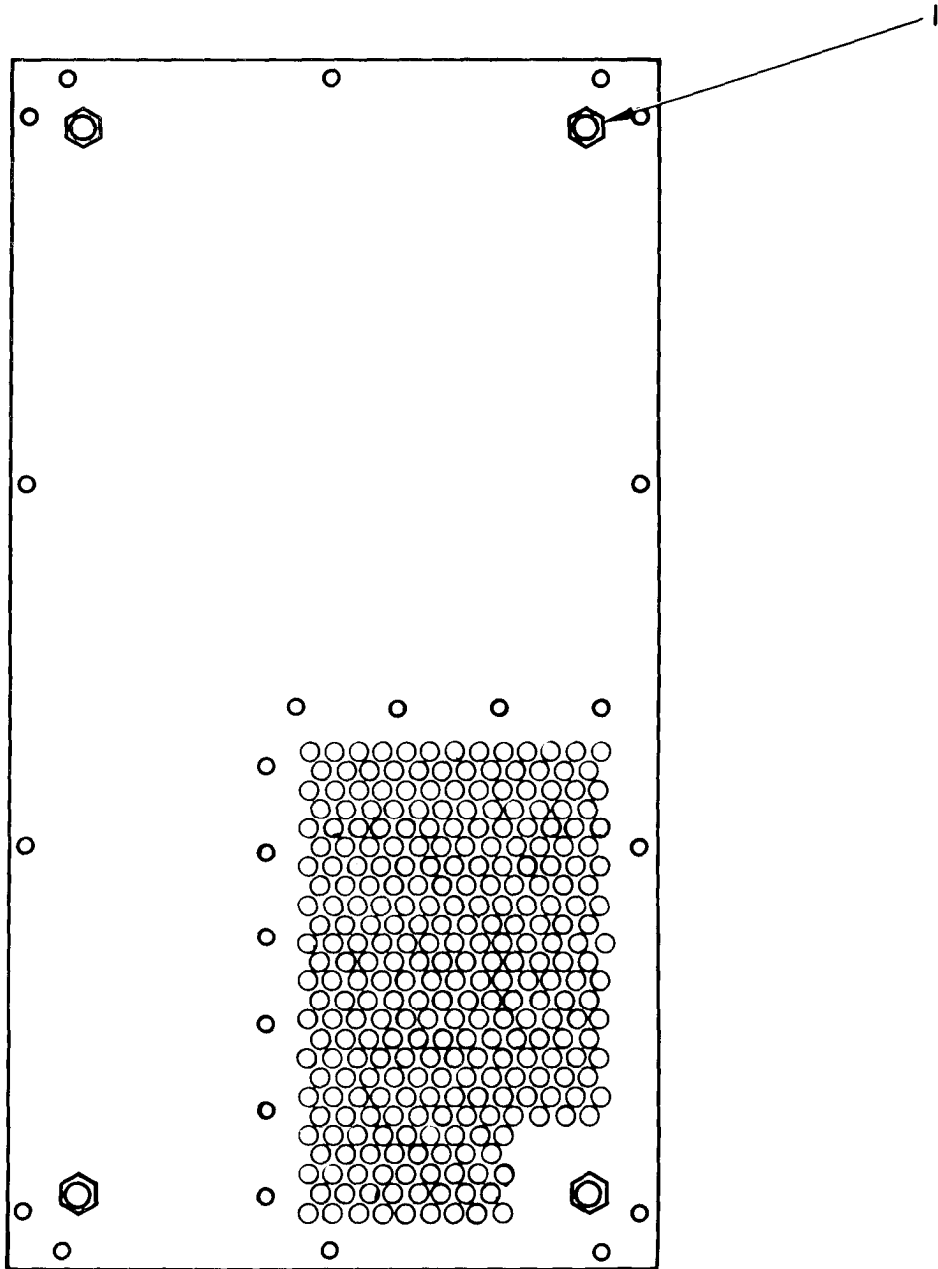
SECTION II		TM11-6625-622-34P						
(1)	(2)	(3)	(4)	(5)	(6)	(7)	(8)	
ILLUSTRATION							QTY	
(A)	(B)	NATIONAL	PART	FSCM	DESCRIPTION	USABLE ON CODE	INC	
FIG	ITEM	STOCK	NUMBER				IN	
NO	NO	NUMBER	NUMBER				UNIT	
22	1	PAHZZ 5305-00-054-6649	MS51957-25	96906	SCREW, MACHINE		EA 4	
22	2	XDHZZ	310-0078-000	79807	WASHER, LOCK		EA 4	
22	3	PAHZZ 5940-00-422-1252	548-8019-002	13499	LINK NUMBER 3		EA 2	
22	4	PAHZZ 5910-00-913-6383	850S75Z	71590	CAPACITOR, FIXED, CERAMIC DIELECTRIC		EA 2	
22	5	XDHZZ	P312-3070-000	77250	STUD, CONTINUOUS THREAD		EA 2	
22	6	PAHZZ 5310-00-208-9457	P313-0045-000	77250	NUT, PLAIN, HEXAGON		EA 2	
22	7	XDHZZ	310-0046-000	79807	WASHER, FLAT		EA 2	
22	8	XDHZZ	302-0086-00	16037	INSULATOR, WASHER		EA 4	
22	9	XDHZZ	3X1619	71590	INSULATOR, STANDOFF		EA 2	
22	10	PAHZZ 5305-00-054-6661	MS51957	96906	SCREW, MACHINE		EA 10	
22	11	PAHZZ 5999-00-761-5892	2022S1LPL001	80302	CLIP, ELECTRICAL		EA 8	
22	12	PAHZZ 5940-00-422-1253	548-8016-002	13499	LINK NUMBER 1		EA 1	
22	13	PAHZZ 5310-00-209-1581	310-0397-000	79807	WASHER, LOCK		EA 10	
22	14	PAHZZ 5310-00-684-9757	540-9497-003	13499	POST, HEXAGON		EA 2	
22	15	PAHZZ 5935-00-665-5718	UG1094U	80058	CONNECTOR, RECEPTACLE, ELECTRICAL		EA 1	
22	16	PAHZZ 5310-00-682-5993	F22NCFMA2-40	72962	NUT, SELF LOCKING, CLINCH		EA 34	
22	17	XDHZZ	540-6682-002	13499	WASHER, MICA		EA 12	
22	18	PAHZZ 5970-00-503-0161	NS5W0205	81350	INSULATOR, STANDOFF		EA 6	
22	19	PAHZZ 6625-00-491-0600	548-8291-004	13499	CHASSIS, ELECTRICAL EQUIPMENT		EA 1	
22	20	PAHZZ 5310-00-639-8071	310-0057-000	79807	WASHER, LOCK		EA 6	
22	21	PAHZZ 5310-00-527-4089	P313-0046-000	77250	NUT, PLAIN, HEXAGON		EA 6	
22	22	PAHZZ 5940-00-422-1246	548-8017-002	13499	LINK NUMBER 2		EA 1	
22	23	PAHZZ 5305-00-054-6670	MS51957-45	96906	SCREW, MACHINE		EA 6	
22	24	PAHZZ 5905-00-811-4381	886SP	10646	RESISTOR, FIXED		EA 4	
22	25	PAHZZ 5940-00-422-1245	548-8022-002	13499	LINK NUMBER 4		EA 1	



ELIDRO24

Figure 23. Test Harness Subassembly TS-1949/URM-157 and TS-1949A/URM-157, Bottom Plate View.

SECTION II		TM11-6625-622-34P							
(1)	(2)	(3)	(4)	(5)	(6)	(7)	(8)		
ILLUSTRATION							QTY		
(A)	(B)	NATIONAL			DESCRIPTION		INC		
FIG	ITEM	STOCK	PART	FSCM		USABLE ON CODE	IN		
NO	NO	NUMBER	NUMBER				UNIT		
		SMR							
		CODE							
23	1	XDHZZ		200-5020-000	13499	BUMPER, RUBBER	EA	4	
23	2	PAHZZ	6625-00-437-2129	554-4886-004	13499	PANEL, FLOOR	EA	1	
23	3	PAHZZ	5305-00-770-2533	MS51959-13	96906	SCREW, MACHINE	EA	24	

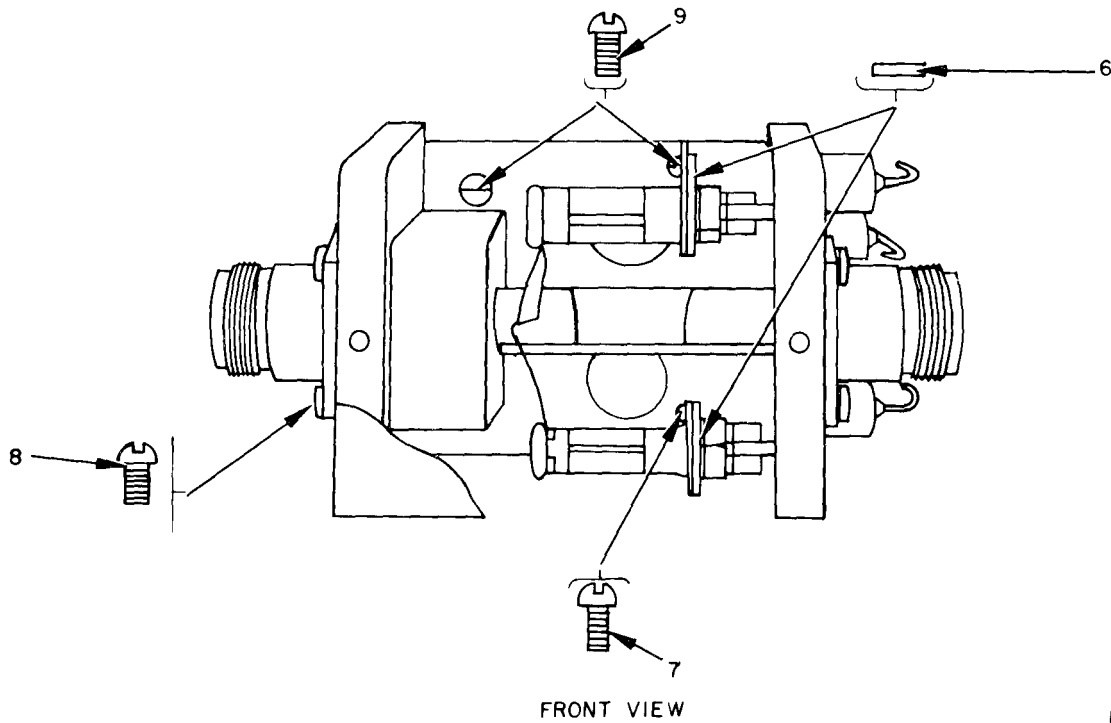
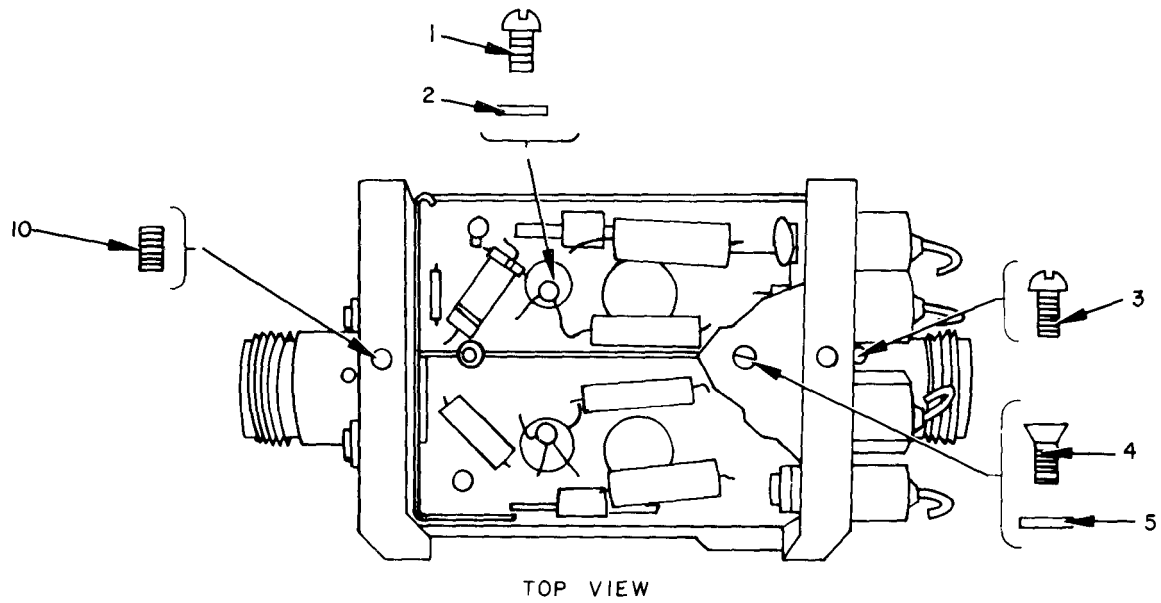


R

ELIDRO25

Figure 24. Test Harness Subassembly TS-1949/URM-157 and TS-1949A/URM-157, Interior Bottom Plate View.

SECTION II		TM11-6625-622-34P						
(1)	(2)	(3)	(4)	(5)	(6)	(7)	(8)	
ILLUSTRATION							QTY	
(A)	(B)	NATIONAL	PART	DESCRIPTION		USABLE ON CODE	INC	
FIG	ITEM	STOCK	NUMBER	FSCM			IN	
NO	NO	CODE	NUMBER				UNIT	
24	1	XDHZZ	F22NC1-040	72962	NUT,SELF LOCKING,CLINCH		EA	4



ELIDR026

Figure 25. Test Harness Subassembly TS-1949/URM-157 and TS-1949A/URM-157, Coupler Directional.



SECTION II		TM11-6625-622-34P						
(1)	(2)	(3)	(4)	(5)	(6)	(7)	(8)	
ILLUSTRATION							QTY	
(A)	(B)	NATIONAL	PART	FSCM	DESCRIPTION	USABLE ON CODE	INC	
FIG	ITEM	STOCK	NUMBER				IN	
NO	NO	NUMBER	NUMBER				UNIT	
25	1	PAHZZ 5305-00-206-1270	P343-0284-000	77250	SCREW, MACHINE	EA	8	
25	2	PAHZZ 5310-00-184-8996	310-0076-000	79807	WASHER, LOCK	EA	16	
25	3	XDHZZ	P343-0328-000	77250	SCREW, MACHINE	EA	1	
25	4	PAHZZ 5305-00-469-6033	P343-0286-000	77250	SCREW MACHINE	EA	6	
25	5	PAHZZ 5310-00-639-8087	1804-00	78189	WASHER, LOCK	EA	2	
25	6	XDHZZ	1914-0	78189	WASHER, LOCK	EA	2	
25	7	PAHZZ 5305-00-059-8228	P343-0299-000	77250	SCREW, MACHINE	EA	4	
25	8	PAHZZ 5305-00-721-4488	P343-0290-000	77250	SCREW, MACHINE	EA	4	
25	9	PAHZZ 5305-00-637-5884	P343-0285-000	77250	SCREW, MACHINE	EA	2	
25	10	XDHZZ	6-32X1-44SPLINE	08664	SETSCREW	EA	1	



Figure 26. Cable Assembly, Special Purpose, Electrical CX-12612/URM-157A.

SECTION II		TM11-6625-622-34P							
(1)	(2)	(3)	(4)	(5)	(6)	(7)	(8)		
ILLUSTRATION					DESCRIPTION		QTY		
(A)	(B)	NATIONAL	PART	FSCM		USABLE ON CODE	U/M	INC	
FIG	ITEM	STOCK	NUMBER					IN	
NO	NO	NUMBER						UNIT	
					GROUP 18 CABLE ASSEMBLY, SPECIAL PURPOSE, ELECTRICAL CX-12612/URM-157A				
26	1	PAHZZ	5935-00-538-4149	MS3108B22-22SC	96906	CONNECTOR, ELECTRICAL	CYA	EA	1

NOTE: LATEST NATIONAL STOCK NUMBER AND PART NUMBER ASSIGNMENTS ARE INCLUDED AT END OF INDEX

STOCK NUMBER	FIGURE NO	ITEM NO	STOCK NUMBER	FIGURE NO	ITEM NO
5305-00-054-5647	18	7	5970-00-503-0161	22	18
5305-00-054-5647	20	18	5940-00-503-6764	18	19
5305-00-054-5648	20	5	5310-00-527-4089	18	5
5305-00-054-6649	17	23	5310-00-527-4089	19	5
5305-00-054-6649	22	10	5310-00-527-4089	22	21
5305-00-054-6661	22	9	5935-00-538-4149	2	4
5305-00-054-6670	22	23	5935-00-538-4149	26	1
5305-00-054-6672	19	3	5940-00-557-1629	21	2
5310-00-058-7988	18	2	5935-00-581-3086	3	5
5310-00-058-7988	19	16	5935-00-581-3086	13	6
5305-00-059-8228	25	7	5935-00-590-6997	13	4
5305-00-059-8249	4	15	5340-00-598-5287	6	3
5935-00-060-2441	8	3	5340-00-598-5287	11	4
6625-00-060-2880	17	24	5340-00-598-5287	13	1
5935-00-060-8066	4	16	5340-00-598-5287	16	4
5935-00-061-7747	4	19	5930-00-606-0164	21	4
5935-00-061-7747	17	27	5935-00-610-0940	3	2
5999-00-081-5971	4	11	5935-00-610-0940	13	7
5999-00-081-5971	20	23	5310-00-614-3500	18	6
5935-00-087-6257	17	19	5310-00-614-3500	19	17
5940-00-087-9838	4	9	5310-00-614-3500	20	17
5940-00-087-9839	4	10	5935-00-615-7883	17	14
5310-00-088-1180	17	6	5940-00-615-8958	4	13
5365-00-141-6944	5	3	5935-00-617-5386	17	1
5365-00-141-6944	10	2	5935-00-617-5386	18	10
5365-00-141-6944	11	3	5310-00-622-1724	17	11
5365-00-141-6944	13	9	5310-00-622-1724	21	8
5365-00-141-6944	14	1	5940-00-632-7234	18	13
5365-00-141-6944	15	2	5930-00-636-1584	17	7
5365-00-141-6944	16	3	5305-00-637-5884	25	9
6240-00-155-7836	17	16	5310-00-639-8071	22	20
5935-00-178-8077	20	19	5310-00-639-8087	25	5
5310-00-181-6119	4	17	5355-00-645-5571	17	14B
5310-00-181-6120	4	12	5940-00-660-3631	19	1
5310-00-184-8996	18	8	5935-00-660-4296	20	16
5310-00-184-8996	20	6	5365-00-663-2125	6	4
5310-00-184-8996	25	2	5365-00-663-2125	7	2
5935-00-192-4729	17	20	5365-00-663-2125	8	2
5305-00-206-1270	25	1	5365-00-663-2125	10	3
5305-00-206-6867	18	4	5365-00-663-2125	11	2
5310-00-208-9457	20	14	5365-00-663-2125	11	3
5310-00-208-9457	22	5	5365-00-663-2125	13	10
5310-00-209-1581	18	16	5365-00-663-2125	14	3
5310-00-209-1581	19	4	5365-00-663-2125	15	3
5310-00-209-1581	22	13	5365-00-663-2125	16	1
5935-00-223-0572	2	5	5935-00-665-5718	22	15
5935-00-223-0572	11	5	5935-00-665-8032	10	4
6625-00-237-4389	1	2	5310-00-682-5993	21	3
5935-00-257-9081	20	20	5310-00-682-5993	22	16
5935-00-259-0205	1	17	5310-00-684-9757	22	14
5940-00-259-8457	19	14	5305-00-721-4488	25	8
5940-00-269-2219	17	25	5310-00-754-3071	18	9
5310-00-269-6291	4	3	5999-00-761-5892	22	11
5905-00-279-2545	18	11	5305-00-763-6962	19	7
5935-00-280-2353	6	2	5305-00-763-6962	20	11
5975-00-281-0024	2	1	5305-00-763-6963	3	4
5920-00-281-0225	20	26	5305-00-763-6963	13	5
5310-00-282-9059	4	2	5305-00-763-6963	20	12
5935-00-295-3056	3	6	5305-00-764-0070	19	2
5935-00-295-3056	17	26	5305-00-764-0071	18	17
5920-00-296-0679	20	26	5305-00-764-2964	17	8
5340-00-336-8164	19	20	5305-00-764-2964	21	9
5340-00-336-8164	20	10	6625-00-766-3847	1	2
5940-00-422-1245	22	25	5305-00-768-0336	17	12
5940-00-422-1246	22	22	5305-00-768-0336	18	3
5940-00-422-1252	22	3	5305-00-768-0336	19	19
5940-00-422-1253	22	12		17	4
6625-00-437-2129	23	2	5305-00-770-2533	23	3
6625-00-437-2130	17	22	5305-00-777-6039	19	13
5995-00-437-2431	2	6	5325-00-780-3430	17	9
5305-00-469-6033	25	4	5995-00-797-7299	1	3
6625-00-471-0623	1	19	5935-00-803-1445	21	10
6625-00-491-0600	22	19	5935-00-809-0786	5	2
5930-00-491-2508	17	14A	5985-00-809-5851	21	7
5995-00-496-8546	21	6	5905-00-811-4381	22	24
5995-00-496-8547	21	5	6210-00-813-6642	17	15



## SECTION IV

## NATIONAL STOCK NUMBER AND PART NUMBER INDEX

TM11-6625-622-34P

PART NUMBER	FSCM	FIGURE NO	ITEM NO	PART NUMBER	FSCM	FIGURE NO	ITEM NO
PT06A16-26SSR	77820	14	2	310-0057-000	79807	22	20
PT06A20-39SSR	77820	9	2	310-0076-000	79807	25	2
PT06A2C-41PSR	77820	6	5	310-0077-000	79807	4	8
PT06A20-41PSR	77820	7	3	310-0077-000	79807	20	22
PT06A20-41PSR	77820	8	1	310-0078-000	79807	17	28
PT06A20-41PSR	77820	9	1	310-0078-000	79807	20	13
PT06A20-41PSR	77820	10	1	310-0078-000	79807	21	16
PT06A20-41PSR	77820	11	1	310-0078-000	79807	22	2
PT06A20-41PSR	77820	14	4	310-0080-000	79807	20	25
PT06A20-41PSR	77820	15	4	310-0080-000	79807	21	15
PT06A20-41PSR	77820	16	2	310-0281-000	79807	18	2
PT06A22-55SSR	77820	16	5	310-0281-000	79807	19	16
P312-3070-000	77250	22	4	310-0396-000	79807	18	8
P313-0045-000	77250	20	14	310-0396-000	79807	20	6
P313-0045-000	77250	22	5	310-0397-000	79807	18	16
P313-0046-000	77250	22	21	310-0397-000	79807	19	4
P313-0046-000	77250	18	15	310-0397-000	79807	22	13
P313-0046-000	77250	19	5	31881	00779	18	19
P313-0056-000	77250	21	1	31891	00779	18	18
P313-0062-000	77250	17	6	4012HOTTINNED	77147	20	2
P323-0300-010	77250	18	4	502-1515-002	13499	18	5
P342-0157-000	77250	4	14	502-1515-002	13499	19	18
P342-0169-000	77250	4	21	504-0706-003	13499	17	10
P343-0284-000	77250	25	1	510-041810-01STC	78189	4	17
P343-0285-000	77250	25	9	510-061810-01STC	78189	4	12
P343-0286-000	77250	25	4	530-6-15	82386	17	24
P343-0290-000	77250	25	8	540-6682-002	13499	22	17
P343-0299-000	77250	25	7	540-9045-003	13499	4	4
P343-0328-000	77250	4	7	540-9053-003	13499	18	9
P343-0328-000	77250	20	15	540-9497-003	13499	22	14
P343-0328-000	77250	25	3	543-8039-000	13499	17	5
P343-0329-000	77250	4	15	543-8118-004	13499	21	7
RC32GF301J	81349	18	11	546-6864-002	13499	4	11
RSM2B14500H	91637	19	11	546-6864-002	13499	20	23
RTMT12M	91663	19	14	546-7242-002	13499	4	1
SKC16-21C1-2	71468	10	4	548-8004-002	13499	4	20
ST42A	09504	17	18	548-8007-003	13499	4	6
				548-8008-003	13499	4	18
TS-1949AURM157	80058	1	2	548-8015-000	13499	19	12
TS-1949URM157	80058	1	2	548-8016-002	13499	22	12
UG1094U	80058	22	15	548-8017-002	13499	22	22
UG201AU	80058	1	17	548-8018-002	13499	21	11
UG536BU	80058	20	16	548-8019-002	13499	22	3
UG88EU	80058	12	1	548-8020-002	13499	21	6
UG88EU	80058	20	21	548-8021-002	13499	21	5
1GA19A1	24446	17	7	548-8022-002	13499	22	25
1N645	07688	19	10	548-8026-003	13499	20	24
100B3000C75	94375	20	4	548-8291-004	13499	22	19
108-740	74970	20	20	553-7216-002	13499	4	5
108-902	74970	21	10	553-7216-002	13499	18	14
12-140D	71785	18	1	553-7216-002	13499	21	13
12-140D	71785	19	15	553-7217-003	13499	3	3
139	77060	2	2	553-7217-003	13499	21	12
162-0975	72619	17	15	553-9904-003	13499	4	9
162-8430-9	72619	17	17	553-9905-003	13499	4	10
1722-01	78189	4	2	554-4886-004	13499	23	2
1804-00	78189	25	5	6-32X1-44SPLINE	08664	25	10
1914-0	78189	20	3	600J	75382	18	13
1914-0	78189	25	6	68-1660-26	72962	17	11
198789H1	76854	21	4	68-1660-26	72962	21	8
2J1569	82389	17	21	68-1660-40	72962	18	6
2J568A	82389	17	19	68-1660-40	72962	19	17
200-5030-000	13499	23	1	68-1660-40	72962	20	17
2022S1LPL001	80302	22	11	68NM62	72962	19	9
2104-06-02-2520N	78189	4	13	68NM62	72962	20	8
2250	83330	17	14B	7468	74545	20	19
23BLK	76545	2	3	761-5007-001	13499	2	6
23RED	76545	2	1	7663K5	15605	17	22
268482A2	76854	17	14A	778-3326-001	13499	17	22
3X1619	71590	22	8	850S75Z	71590	22	1
302-0086-00	16037	22	7	886SP	10646	22	24
302-1600-000	74921	18	12	8947-151	04009	4	3
310-0046-000	79807	19	8				
310-0046-000	79807	20	9				
310-0046-000	79807	22	6				

## LATEST NATIONAL STOCK NUMBER ASSIGNMENTS

STOCK NUMBER	FIGURE NO.	ITEM NO.
5940-00-060-3751	2	7
5365-00-598-5379	3	1
5365-00-598-5379	13	2
5930-00-655-1514	17	18
5930-00-655-1523	17	13
5935-00-801-6617	17	3
5935-00-804-5816	17	2
6210-00-813-8265	17	17
5935-00-880-3986	7	1
5935-00-951-8986	13	3

## LATEST PART NUMBER ASSIGNMENTS

PART NUMBER	FSCM	FIGURE NO.	ITEM NO.
MS3102R18-4P	96906	17	3
MS3102R22-22P	96906	17	2
MS35058-31	96906	17	13
MS35446-5	96906	2	7







# SOMETHING WRONG WITH THIS MANUAL?

THEN... JOT DOWN THE DOPE ABOUT IT ON THIS FORM, TEAR IT OUT, FOLD IT AND DROP IT IN THE MAIL!

FROM: (YOUR UNIT'S COMPLETE ADDRESS)

Commander  
Stateside Army Depot  
ATTN: AMSIA-US  
Stateside, N.J. 07703

DATE 10 July 1975

PUBLICATION NUMBER

TM 11-5840-340-12

DATE

23 Jan 74

TITLE

Radar Set AN/P-28-76

BE EXACT... PIN-POINT WHERE IT IS

IN THIS SPACE TELL WHAT IS WRONG AND WHAT SHOULD BE DONE ABOUT IT:

PAGE NO.	PARA-GRAPH	FIGURE NO.	TABLE NO.
2-25	2-28		
3-10	3-3		3-1
5-6	5-8		
		F03	

Recommend that the installation antenna alignment procedure be changed through to specify a 2° IFF antenna lag rather than 1°.

REASON: Experience has shown that with only a 1° lag, the antenna servo system is too sensitive to wind gusting in excess of 25 knots, and has a tendency to rapidly accelerate and decelerate as it hunts, causing strain to the drive train. Hunting is minimized by adjusting the lag to 2° without degradation of operation.

Item 5, Function column. Change "2 db" to "3db."

REASON: The adjustment procedure for the TRANS POWER FAULT indicator calls for a 3 db (500 watts) adjustment to light the TRANS POWER FAULT indicator.

Add new step f.1 to read, "Replace cover plate removed in step e.1, above."

REASON: To replace the cover plate.

Zone C 3. On J1-2, change "+24 VDC to "+5 VDC."

REASON: This is the output line of the 5 VDC power supply. + 24 VDC is the input voltage.

TEAR ALONG DOTTED LINE

TYPED NAME, GRADE OR TITLE, AND TELEPHONE NUMBER

SSG I. M. DeSpirito 999-1776

SIGN HERE:

*SSG I. M. DeSpirito*

DA FORM 2028-2 (TEST) 1 AUG 74

P.S.--IF YOUR OUTFIT WANTS TO KNOW ABOUT YOUR MANUAL "FIND," MAKE A CARBON COPY OF THIS AND GIVE IT TO YOUR HEADQUARTERS.

HISA 1686-75





THEN... JOT DOWN THE DOPE ABOUT IT ON THIS FORM, TEAR IT OUT, FOLD IT AND DROP IT IN THE MAIL!

# SOMETHING WRONG WITH THIS MANUAL?

FROM: (YOUR UNIT'S COMPLETE ADDRESS)

DATE

PUBLICATION NUMBER

DATE

TITLE

BE EXACT... PIN-POINT WHERE IT IS

IN THIS SPACE TELL WHAT IS WRONG AND WHAT SHOULD BE DONE ABOUT IT:

PAGE NO.

PARA-GRAPH

FIGURE NO.

TABLE NO.

TEAR ALONG DOTTED LINE

TYPED NAME, GRADE OR TITLE, AND TELEPHONE NUMBER

SIGN HERE:

FILL IN YOUR  
UNIT'S ADDRESS

FOLD BACK

DEPARTMENT OF THE ARMY

OFFICIAL BUSINESS

PENALTY FOR PRIVATE USE, \$300

POSTAGE AND FEES PAID  
DEPARTMENT OF THE ARMY  
DOD-314



Commander  
US Army Electronics Command  
ATTN: DRSEL-MA-Q  
Fort Monmouth, New Jersey 07703

TEAR ALONG DOTTED LINE

FOLD BACK

REVERSE OF DA FORM 2028-2 (TEST)



# SOMETHING WRONG WITH THIS MANUAL?

THEN... JOT DOWN THE DOPE ABOUT IT ON THIS FORM, TEAR IT OUT, FOLD IT AND DROP IT IN THE MAIL!

FROM: (YOUR UNIT'S COMPLETE ADDRESS)

DATE

PUBLICATION NUMBER

DATE

TITLE

BE EXACT... PIN-POINT WHERE IT IS

IN THIS SPACE TELL WHAT IS WRONG AND WHAT SHOULD BE DONE ABOUT IT:

PAGE NO.

PARA-GRAPH

FIGURE NO.

TABLE NO.

TEAR ALONG DOTTED LINE

TYPED NAME, GRADE OR TITLE, AND TELEPHONE NUMBER

SIGN HERE:

FILL IN YOUR  
UNIT'S ADDRESS

FOLD BACK

DEPARTMENT OF THE ARMY

OFFICIAL BUSINESS

PENALTY FOR PRIVATE USE, \$300

POSTAGE AND FEES PAID  
DEPARTMENT OF THE ARMY  
DOD-314



Commander  
US Army Electronics Command  
ATTN: DRSEL-MA-Q  
Fort Monmouth, New Jersey 07703

TEAR ALONG DOTTED LINE

FOLD BACK

REVERSE OF DA FORM 2028-2 (TEST)



FILL IN YOUR  
UNIT'S ADDRESS

FOLD BACK

DEPARTMENT OF THE ARMY

OFFICIAL BUSINESS

PENALTY FOR PRIVATE USE, \$300

POSTAGE AND FEES PAID  
DEPARTMENT OF THE ARMY  
DOD-314



Commander  
US Army Electronics Command  
ATTN: DRSEL-MA-Q  
Fort Monmouth, New Jersey 07703

TEAR ALONG DOTTED LINE

FOLD BACK



By Order of the Secretary of the Army:

BERNARD W. ROGERS  
*General, United States Army*  
*Chief of Staff*

Official:

PAUL T. SMITH  
*Major General, United States Army*  
*The Adjutant General*

DISTRIBUTION:

To be distributed in accordance with DA Form 12-36A, Direct and General Support maintenance requirements for AN/URM-157.





DEPARTMENT OF THE ARMY  
US ARMY AG PUBLICATIONS CENTER  
1655 WOODSON ROAD  
ST. LOUIS, MISSOURI 63114

OFFICIAL BUSINESS  
PENALTY FOR PRIVATE USE \$300

POSTAGE AND FEES PAID  
DEPARTMENT OF THE ARMY  
DOD 314



ST. LOUIS MO 63114  
SEP 19 1968

TM 11-6625-622-34P 01  
CDR 02309 10F1  
US ARMY MAINT MGT CEN 11332  
ATTN: MGT SVC BR  
LEXINGTON KY 40507